

3/20/2025

Burnham Commercial Quotation

QTY	EQUIPMENT DESCRIPTION					
2	4FW-311-50-GG-LB 30 PSI Design Water Boiler		Included	Included		Included
2	JB2G/SG-20-RM7840L-M.20/ Shop Mounted		Included	Included		Included
2	Operating :	Honeywell L4006A Shop Mounted	Included	Included		Included
2	High Limit :	Honeywell L4006E Shop Mounted	Included	Included		Included
2	Firing Rate :	Honeywell T991A Shop Mounted	Included	Included		Included
2	Low Fire Hold:	Honeywell L4006B Shop Mounted	Included	Included		Included
	Water Level Controls:					
2	Primary LWCO :	M&M FPC-1000 Shop Mounted	Included	Included		Included
	Auxillary LWCO :	None x	Included	Included		Included
	HWCO :	x Shop Mounted				
	Additional Features & Equipment:					
	Shell Details :					
2	- Lifting Lugs		Included	Included		Included
2	- 6" Flanged supply ILOS 8" Standard - per customer		Included	Included		Included
2	- Bolt-On Rear Smokebox		Included	Included		Included
2	- Locking Quadrant Damper		Included	Included		Included
2	- Top Flue Outlet		Included	Included		Included
	Front Smokebox Details :					
2	- Bolt-On Front Smokebox Doors		Included	Included		Included
	Base Details :					
2	- Standard Extended		Included	Included		Included
	Jacket Details :					
2	- Install Standard Jacket With 1in Thick Fiberglass Insulation		Included	Included		Included
	Trim Details :					
2	3-1/2in Temperature / Pressure Gauge Shipped Loose		Included	Included		Included
2	FS4-3 Flow Switch Shipped Loose		Included	Included		Included
2	30 PSI Relief Valves Shipped Loose		Included	Included		Included
2	3" Stack Thermometer Shipped Loose		Included	Included		Included
	Burner Features & Options					
2	Burner Mounting Plate - Customer Supplied / Factory Mounted Burner:		Included	Included		Included
	- Scotch burners must be delivered with PrePiped and Wired Gas Trains in order to be mounted					
	- Scotch delivered without PP+W gas trains will be charged time and materials to assemble					
	- C and Firebox burners gas trains are shipped loose and unassembled standard					
	- Gas trains are normally piped left hand side, if right side is needed please confirm at order					
	- Mounting C and Firebox gas trains at additional charge					
	- Side mounting remote control panels at additional charge					
	- Mounting Customer Supplied VFD at additional charge					
2	Burner Mounting Charge - Firebox 63-360		Included	Included		Included
0	OPTIONAL: Side mount & wire remote control panel 250hp and up		4,641.00			
0	OPTIONAL: Mounting of non-standard, Stainless steel or digester gas train		5,253.00			
0	OPTIONAL - Gas train mounting charge - C or Firebox 2" or less		2,320.00			
	*To have gas trains factory mounted they must come PP&W from burner manufacturer					
	OPTIONAL: Shrink Wrap each		\$ 1,035.00			
1	Submittal		Included	Included		Included
Freight: Pre-Paid & Added			Subtotal		Net Total	
Lead-Time: 9 - 11 Weeks		Firetest additional week per fuel	\$		\$ 126,580.00	

Revision Date:

Revision:

SO#:

Notes and Exceptions:

Items shown as **Optional are not included in quotation totals.

A change in January 2015 regarding efficiency requirements from the Department of Energy (DOE) required recertification of all boilers. The



Driven to move your business forward



WEBSTER
COMBUSTION
A Selas Heat Technology Company

Quote No. **Q000021203**

PHONE NO. **435-671-0596**

☐ ORDER ☒ QUOTATION
☐ HIGHLY ENGINEERED APP.

Date **February 4, 2025**

To: **Stantec / Cassandra Flores**

From: **Cody Gamangasso**
Folsom Industrial

Qty. Submittal Request? (PO is required)

☐ Standard ☐ Detailed ☐ Enhanced
☐ Electronic (CD)/Paper ☐ Paper Only

Standard Submittals ordered in conjunction with burner receives 1 CD and 1 Paper OR 4 Paper Copies at No Charge

See page 2 for additional submittal and submittal type charges

JOB NAME: **WWTP**

LOCATION: **ID**

Order Number

P.O. No.

HOLD FOR APPROVAL: ☐ YES or

☐ NO, SHIP DATE:

Qty. Manuals Required (Per Burner)

☐ Electronic (CD)/Paper ☐ Paper Only

Manuals ordered in conjunction with burner receives

1 CD with each burner and 1 Paper to Customer OR

4 Paper copies per burner (1 with burner and 3 to

customer) at NO Charge.

See page 2 for additional manual charges

ESSENTIAL ORDERING INFORMATION AND DATA

FUELS:

Gas **Natural & Digester** Gas Pressure to Regulator **18" w.c both** Gas NOx Level **#N/A**

Oil **##** Oil NOx Level **##** Pilot Gas Pressure (for Straight Oil)

ELECTRICAL: Supply Voltage **460V / 60 / 3 ph.** Control Voltage **120V / 60 / 1 ph.**

VESSEL: Manufacturer **Burnham** Model **4FW-311-50**

Boiler Type **Firebox** Input **2,500** MBH GPH

Furnace Dims. inchs: Dia/Width: Len: Hgt: Furnace Press. **1.8"** in w.c.

Turn-Down Ratio Gas **#N/A** Oil **#N/A** C/L Opening to floor Altitude **2500'** Ft.

OPERATION **Mod. (M)** Posi-Control ☐ Steam ☒ Water
Operating Pressure Psig

CONFIGURATION **Inverted** PANEL LOCATION **Back Mount** Junction Box Location **#N/A**
CODES: ☐ UL ☐ FM ☐ IRI ☐ ULC ☒ CSD-1 ☐ NFPA-85 ☐ GE Gap

Equipment Description:

	Equipment Description:	Price
<input checked="" type="checkbox"/>	Burner Model: JB2G/SG-20-RM7840L-M.20/M.30VRD-CSD1	\$ INC
<input checked="" type="checkbox"/>	Main Gas Train Size: 2" TYPE: Asco gas train	INC
<input checked="" type="checkbox"/>	Secondary Train (if required) Size: 3" TYPE: Siemens VRD gas train	\$ INC
<input type="checkbox"/>	Proof Of Closure Switch Gas Reg. 	
<input checked="" type="checkbox"/>	Gas Piping Config. 6 o'clock & to the right Gas connection direction Downward Gas Connection	
<input type="checkbox"/>	Prepiped and Prewired Gas Train #N/A	\$ -
<input type="checkbox"/>	Prepiped and Prewired Secondary Gas Train (if used) #N/A	\$ -
<input type="checkbox"/>	Dual Pilot Valves \$ - Gas Gauge(s) Shipped Loose \$147 ea. \$ -	\$ -
<input type="checkbox"/>	Burner Manifold Gas Gauge Mounted \$ -	\$ -
<input checked="" type="checkbox"/>	Pilot Fuel <input checked="" type="checkbox"/> Natural Gas <input type="checkbox"/> Propane <input type="checkbox"/> Dual Nat / LP Manual 3 way valve 	Std.
<input type="checkbox"/>	Webster Cam-Netic II Gas Metering Valve	\$ -
<input checked="" type="checkbox"/>	Digester Gas = 550 Btu/Ft ³ ; 0.95 SG; <10 ppm H ₂ S; with No Measurable Moisture	
<input type="checkbox"/>		
<input type="checkbox"/>		
<input type="checkbox"/>		
<input type="checkbox"/>	Oil Fuel:	
<input type="checkbox"/>	Low Oil Pressure switch ###	
<input type="checkbox"/>	Direct Spark Ignition	
<input type="checkbox"/>	Remote Pump Set (includes pump, motor, regulating valve)	
<input type="checkbox"/>	Pilot Fuel <input type="checkbox"/> Natural Gas <input type="checkbox"/> Propane <input type="checkbox"/> Dual Nat / LP Manual 3 way valve 	\$ -
<input type="checkbox"/>	Oil Strainer <input type="checkbox"/> Single Basket <input type="checkbox"/> Dual Basket 	\$ -
<input type="checkbox"/>	Oil Filter 	\$ -
<input type="checkbox"/>	Atomizing Media #N/A	
<input type="checkbox"/>	Webster Cam-Netic II Oil Metering Valve	\$ -
<input type="checkbox"/>		

Quote No.	Q000021203
Order No.	0

[illegible]

JOB NAME: WWTP
 LOCATION: ID
 DATE: February 4, 2025

Quote No. Q000021203
 Order No. 0



POSI-CONTROL SYSTEMS:

AUTOFLAME:

<input type="checkbox"/>	<input type="checkbox"/> Mark 8	<input type="checkbox"/> Mark 8 Evo w/WLC	<input type="checkbox"/> Mini Mark 8	
<input type="checkbox"/>	Sensor (required) <input type="checkbox"/> Temperature	<input type="checkbox"/> Pressure	<input type="checkbox"/> 1.5-44.5	<input type="checkbox"/> 30-267 <input type="checkbox"/> 30-445
<input type="checkbox"/>	EGA / C System (Standard) Includes the following cells - O2, CO2, CO, NO			-
<input type="checkbox"/>	(Std.) + NO2 Sensor			-
<input type="checkbox"/>	(Std.) + SO2 Sensor			-
<input type="checkbox"/>	(Std.) + NO2 + SO2 Sensors			-
<input type="checkbox"/>	Data Transfer Interface (DTI)			-
<input type="checkbox"/>	Webster Standard Sensors	<input type="checkbox"/> Autoflame Sensors	<input type="checkbox"/> Gas	<input type="checkbox"/> Oil <input type="checkbox"/> Air
<input type="checkbox"/>	Mark 8 Scanner	<input type="checkbox"/> UV	<input type="checkbox"/> UV Self-check	<input type="checkbox"/> IR Infra-red

SIEMENS

<input type="checkbox"/>	<input type="checkbox"/> LMV36	<input type="checkbox"/> LMV37	<input type="checkbox"/> LMV51.140	<input type="checkbox"/> LMV52.240
<input type="checkbox"/>	Sensor (required) <input type="checkbox"/> Temperature	<input type="checkbox"/> Pressure	<input type="checkbox"/> 0-60	<input type="checkbox"/> 0-150, <input type="checkbox"/> 0-300
<input type="checkbox"/>	Oxygen Trim			
<input type="checkbox"/>	Flue Gas Collector	#N/A		
<input type="checkbox"/>	Siemens Cable for Remote Panel	<input type="checkbox"/> 10 Ft.	<input type="checkbox"/> 20 Ft.	<input type="checkbox"/> 30 Ft.
<input type="checkbox"/>	Variable Speed Drive Interface Kit (VFD not included)			

FIREYE

<input type="checkbox"/>	<input type="checkbox"/> NEXUS	<input type="checkbox"/> NXF4000	<input type="checkbox"/> PPC6000
<input type="checkbox"/>	Sensor (required) <input type="checkbox"/> Temperature	<input type="checkbox"/> Pressure	<input type="checkbox"/> 0-15 <input type="checkbox"/> 0-200 <input type="checkbox"/> 0-300
<input type="checkbox"/>	NXF4000 Cable for remote panel	<input type="checkbox"/> 10 Ft.	<input type="checkbox"/> 20 Ft. <input type="checkbox"/> 30 Ft.
<input type="checkbox"/>	Oxygen Trim		

Every attempt has been made to comply fully with all applicable sections of the specification provided to Webster Engineering. All equipment proposed is itemized on this quote form for your review. Any items specified, but not included on this quote form, are not included, and will be provided "by others".

- ☒ Quoted furnace dimensions and furnace pressure must be confirmed prior to placing order.
- ☒ Receipt of purchase order will constitute confirmation of quoted furnace dimensions and pressure.

Quoted Price Valid for 30 Days

Quantity of Units 2

BURNHAM®

Commercial Boilers

HEAVY STEEL CONSTRUCTION

COMPACT,
EASY TO CLEAN

SAVE ON
INSTALLATION,
OPERATION &
MAINTENANCE

15 PSI STEAM,
30 OR 60 PSI
WATER

ECONOMICAL



Series 4FH

FORCED DRAFT FIREBOX BOILER

Series 4FH FORCED DRAFT FIREBOX BOILER

PAGE 2

The Versatile Boiler

The Burnham Commercial 4FH forced draft steel firebox boiler is a consistent sales leader in the heating industry. Its compact design saves on installation, operation and maintenance.

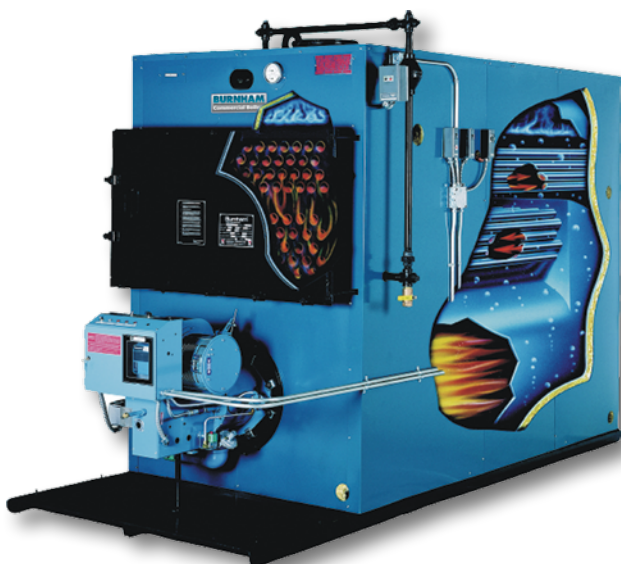
4FH Saves in Operation

- The furnace surrounds the flame with highly efficient waterbacked primary heat absorbing surfaces. This large combustion chamber is easy to fire and accommodates many forced draft burners without flame impingement or other critical firing problems.
- A dual fired burner allows you to burn the more economical fuel or the most readily available fuel at the flip of a switch and affords you leverage in negotiating fuel prices.
- The 4FH is an economical heat source, whether used singly or in multiples. In fact, 4FHs with modulating burners may be sequenced to operate in a step-fired system more cost effectively than a large number of space saver boilers when ongoing maintenance costs are considered.

4FH Saves on Maintenance

- Superior design makes the 4FH easy to clean and maintain—requiring no special tools, materials or skills.
- Opening the front flue door allows firetubes to be brushed out quickly, unlike the watertubes used in some boilers which can be virtually impossible to clean.
- Elaborate or expensive proprietary seals are not required to re-close the doors as with some boilers.
- As a wetback boiler, there is no delicate or expensive rear refractory to maintain.

*60-psi water boiler - consult factory for available sizes.



Standard Equipment

Boiler:

The boilers are a three-pass design constructed and stamped in accordance with ASME Section IV of the ASME Code for 15 psig steam or 30 psig water on any size boiler or 60 psig water on sizes 4FW63 through 4FW993. They are the sealed forced draft firing design with skid base and floor insulation. The flue outlet is a top outlet on sizes 4FH63 through 4FH345 and a rear outlet on sizes 4FH450 and larger. Optional outlets are available on all sizes. The boiler comes complete with a gas tight front flue cleanout door, rear observation port on sizes 4FH63 through 4FH345, or rear access door and observation port on sizes 4FH450 and larger and lifting lugs on sizes 4FH127 and larger. Optional access doors and lifting lugs are available for all sizes.

Jacket:

Rectangular type 1-inch fiberglass insulated jacket on sizes 4FH63 through 4FH345, 2-inch fiberglass insulated rectangular jacket on sizes 4FH450 through 4FH675 and 2-inch fiberglass wrap around jacket on sizes 4FH827 and larger.

Steam Trim:

The following trim is shop mounted and wired: MM157 combination pump control and LWCO with alarm contacts and quick opening blowoff valves, probe type manual reset auxiliary LWCO, operating pressuretrol, manual reset high limit pressuretrol and appropriate firing rate control when required.

The following trim is shipped loose for field mounting: 3.5-inch steam pressure gauge (on models 4FHL63 through 4FH675), 6-inch steam pressure gauge (on models 4FH827 and larger), ASME side outlet safety valve(s) and gauge glass set.

Water Trim:

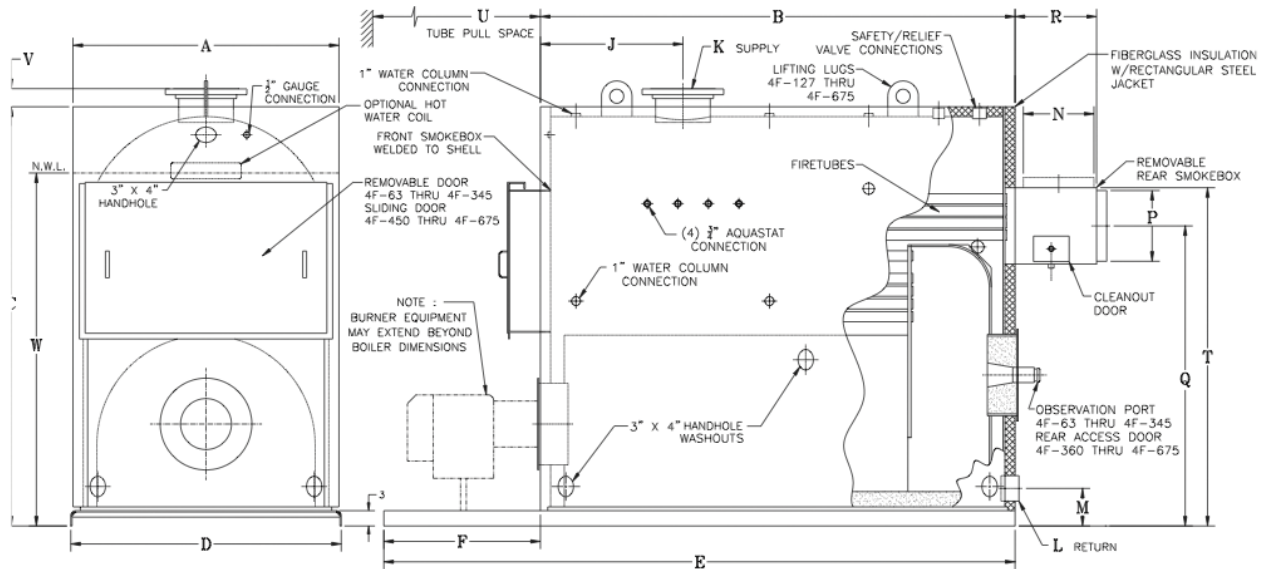
The following trims are shop mounted and wired: probe type LWCO (on 30 psig models 4FW63 through 4FW675) or MM63M manual reset LWCO with quick opening blowoff valve (on 30 psig models 4FW827 and larger) or probe type LWCO (on 60 psi models 4FW63 through 4FW675) or MM150M manual reset LWCO with quick opening blowoff valve (on all 60 psi boilers on models 4FW827 and larger), operating aquastat, manual reset high limit aquastat and appropriate firing rate control when required.

The following trims are shipped loose for field mounting: 3.5-inch theraltimeter (on models 4FW63 through 4FW675) or 5-inch thermometer and 6-inch pressure/altitude gauge (on models 4FW827 and larger) and loose ASME side outlet relief valve(s).

Burner:

As selected for the fuel to be burned, mounted and wired. Refer to burner data sheets for details of burner equipment.

Series 4FH MODELS 63 – 675



DIMENSIONS (INCHES)

4FH Boiler Models	63	78	92	107	127	154	180	209	240	277	311	345	360	450	563	675
A - Boiler Width	31	31	31	31	36-3/8	36-3/8	36-3/8	36-3/8	45-1/8	45-1/8	45-1/8	45-1/8	52-3/4	52-3/4	56-1/2	56-1/2
B - Boiler Length	32	39	45-1/2	52-1/2	44-1/2	53	61	70	57	65	72-1/2	80	80-1/4	93-1/4	104-3/8	122-1/4
C - Boiler Height	55-1/4	55-1/4	55-1/4	55-1/4	63-5/8	63-5/8	63-5/8	63-5/8	70-5/8	70-5/8	70-5/8	70-5/8	82-7/16	82-7/16	85-3/16	85-3/16
D - Base Width	33-1/4	33-1/4	33-1/4	33-1/4	38-5/8	38-5/8	38-5/8	38-5/8	47-3/8	47-3/8	47-3/8	47-3/8	53-1/8	53-1/8	57	57
E - Base Length	47-1/2	54-1/2	65	72	64	72-1/2	80-1/2	92-1/2	79-1/2	87-1/2	95	102-1/2	107-1/2	124	135-1/8	153
F - Base Extension	15-1/2	15-1/2	19-1/2	19-1/2	19-1/2	19-1/2	19-1/2	22-1/2	22-1/2	22-1/2	22-1/2	26-3/4	30-3/4	30-3/4	30-3/4	30-3/4
G - Front Smoke Box Height	27-5/16	27-5/16	27-5/16	27-5/16	29-7/16	29-7/16	29-7/16	29-7/16	35-1/8	35-1/8	35-1/8	35-1/8	38-1/2	38-1/2	41-9/16	41-9/16
H - Front Smoke Box Depth	5-1/2	5-1/2	5-1/2	5-1/2	6-1/2	6-1/2	6-1/2	6-1/2	7-1/2	7-1/2	7-1/2	7-1/2	6-1/2	6-1/2	7-1/2	7-1/2
J - Supply Location	13	13	13	13	16	16	16	16	19	19	19	19	28	28	28	28
*K - Supply Size	4	4	4	4	6	6	6	6	6	8	8	8	8	10	10	10
*L - Return Size	3	3	3	3	4	4	4	4	4	4	4	4	4	4	4	4
M - Return Location	6-1/2	6-1/2	6-1/2	6-1/2	7	7	7	7	7	7	7	7	7-3/8	7-3/8	7-3/8	7-3/8
N - Top Vent Collar Diameter	7	7	7	7	10	10	10	10	12	12	12	12	—	—	—	—
P - Rear Vent Collar Diameter	—	—	—	—	—	—	—	—	—	—	—	—	14	14	18	18
Q - Rear Vent Collar Height	38	38	38	38	46-1/2	46-1/2	46-1/2	46-1/2	52	52	52	52	58-13/16	58-13/16	59-5/8	59-5/8
R - Smoke Box Depth	9	9	9	9	12	12	12	12	14	14	14	14	16	16	20	20
T - Top Vent Collar Height	42-1/2	42-1/2	42-1/2	42-1/2	52-1/2	52-1/2	52-1/2	52-1/2	59-1/4	59-1/4	59-1/4	59-1/4	66-5/16	66-5/16	69-1/8	69-1/8
U - Tube Pull Space	32	39	45-1/2	52-1/2	44-1/2	53	61	70	57	65	72-1/2	80	81-1/2	94	105	123
V - Supply Fitting Height	1-1/2	1-1/2	1-1/2	1-1/2	3-1/4	3-1/4	3-1/4	3-1/4	3-1/4	3-1/4	3-1/4	3-1/4	3-3/8	3-3/8	3-7/16	3-7/16
W - Normal Water Line Height	43-3/4	43-3/4	43-3/4	43-3/4	51-1/2	51-1/2	51-1/2	51-1/2	58	58	58	58	69-3/16	69-3/16	72	72

*3" and 4" are IPS female thread, 6" and larger are flanged. 150# bolt pattern. Specifications and dimensions data subject to change without notice.

Model JB2 Forced Draft Burners

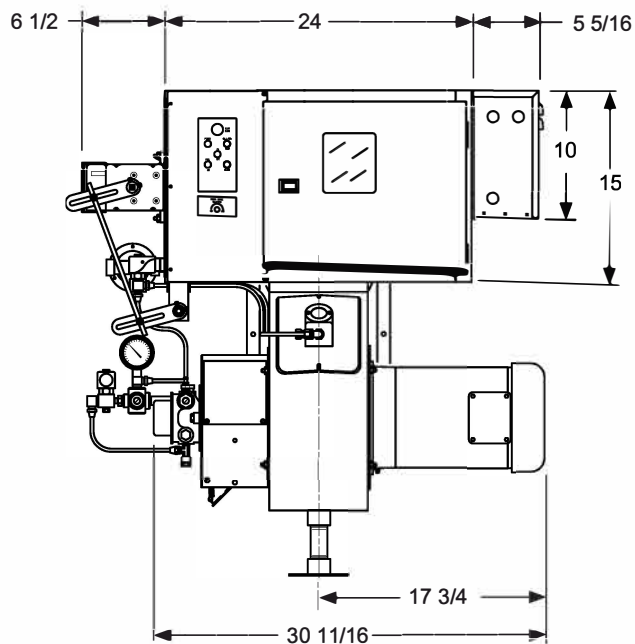
Specification & Dimensional Data

(900 - 6000 MBH Input)

Fuels Burned and Control Systems

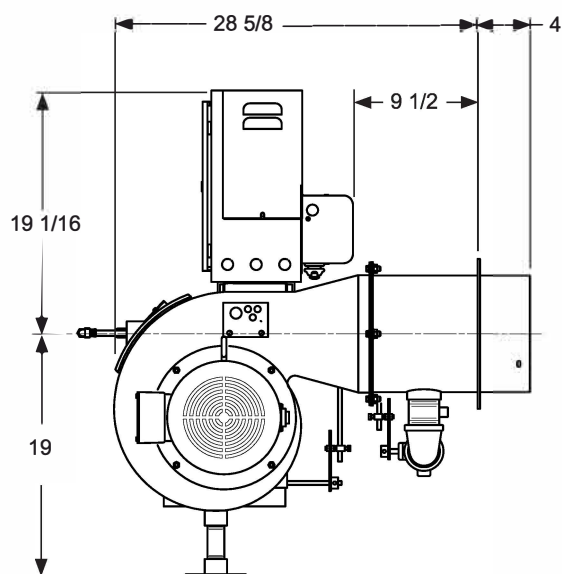
- Natural Gas, Propane, Digester or Mixed Gases
- Light #2 through Heavy #6 Fuel Oil
- Low Fire Start, Low-High-Low, Modulating or Micro Modulation
- Control Circuit Requires 120 vac, 60 Hz, Single Phase Voltage Supply

Check appropriate box to indicate selected version. (Dimensions are +/- 1/4inch)

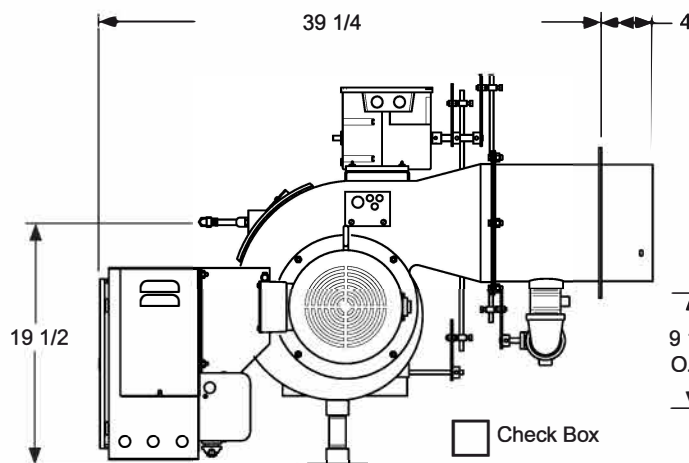


**Standard Arrangement
End View**

☐ Check Box

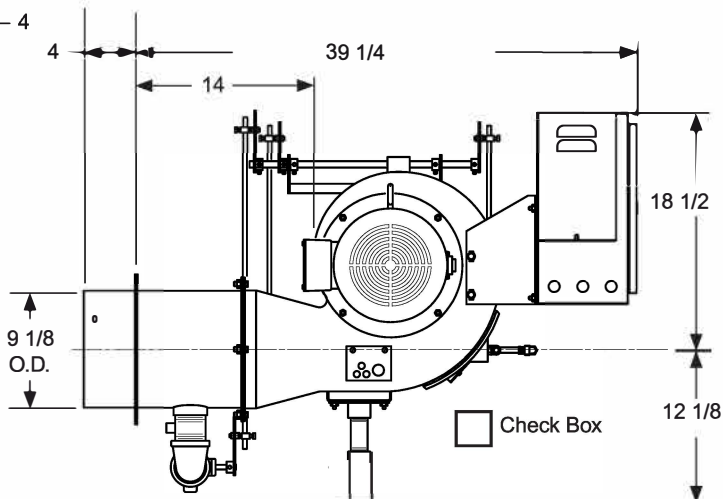


**Standard Arrangement
Elevation
Side View**



**Standard Burner Arrangement
Elevation
W/ Optional Back Mount Control Cabinet
Side View**

☐ Check Box



**Inverted Burner Arrangement
Elevation
Side View**

☐ Check Box

Model JB2 burners are listed by Underwriters Laboratories, Inc. (UL / ULC). Also by the State of Massachusetts Fire Marshal, City of New York Board of Standards and Appeals, State of Minnesota and can be packaged to meet specific requirements of IRI, FM, GE GAP, NFPA, MIL spec. or other special insurance or local code requirements.

Model JB2 - Specification Data (900 - 6000 MBH Input)

Page 2 of 2

(1) STANDARD UL EQUIPMENT AND IMPORTANT OPTIONS		Gas	No. 2 Oil	
			Pressure Atomized	Air Atomized
General	Motor, Fan and Air Inlet Control	X	X	X
	Air Flow Switch	X	X	X
	(2) Burner Mounted Control Panel, Switch and Indicator Lights	X	X	X
	Flame Safety Control	X	X	X
	Ultra Violet Scanner	X	X	X
	Motor Controller (single phase voltage)	X	X	X
	Motor Starter w/Overloads (3 PH volt)	X	X	X
	Fuel Selector Switch	Duel Fuel Burners Only		
Ignition	Proven Gas Pilot Ignition	X		X
	(1) JB2-30 and JB2-50	X	X	X
	Pilot Solenoid Gas Valve	X		X
	Pilot Gas Regulator & Manual Valve	X		X
	Pilot Gas Ignition Transformer	X		X
	Direct Spark Oil Ignirtion		(3)	
	Direct Spark Oil Ignition Transformer		(3)	
Options	Inverted Housing	X	X	X
	Alternate Control Cabinet Positioning	X	X	X
	Remote Control Panel	X	X	X
	Fuel Metering CAM-NETIC II	X	X	X

STANDARD UL EQUIPMENT AND IMPORTANT OPTIONS		Gas	No. 2 Oil	
			Pressure Atomized	Air Atomized
Gas Fuel	Main Manual Shutoff Valve	X		
	Main Safety Shutoff Valve	X		
	Second Safety Shutoff Valve	X		
	Main Gas Regulator	X		
	Gas Checking Valve	X		
	High and Low Gas Pressure Switches	X		
	Metering Valve (modulating systems)	X		
	Normally Open Vent Valve	Opt.		
Oil Fuel	Oil Drawer Assembly with Diffuser		X	X
	Oil Nozzles		X	X
	Integral Oil Pump (JB2-07 to JB2-20)		X	
	Remote Oil Pump (JB2-30 to JB2-50)		X	Opt.
	Two Safety Shutoff Valves		X	X
	Low Air Atomizing Switch			X
	Low Oil Pressure Switch (STD when using remote oil pump)		X	X
	Oil Pressure Gauge		X	X
	Oil Metering Valve (modulating system)		X	X
	Future Gas Combustion Head		Opt.	Opt.
	Air Compressor			X

1. The configuration of each unit will vary with specific job requirements such as input rating, electrical specification and special agency approval codes.

The above chart shows those items standard to a basic burner plus a few options that may be added.

2. Indicator lights are "Power On", "Call for Heat", "Fuel On" and "Flame Fail" for hard wired panels. "Alarm", "Low Water", "Power", "Call for Heat", "Ignition On", and "Fuel On" for circuit board light panels.

3. Maximum rate for direct spark is 20 GPH at low fire or 35 GPH at high fire. (standard on straight oil burners, pressure atomized)

Model JB2 - Sizing and Application Data (contact Webster for complete information)

Model Number	Maximum Furnace Pressure	Burner Firing Capability Range		Burner Motor HP	Gas Train			Oil Pump Motor HP		Air Compressor Motor HP
					Pipe Size	(3) Inlet Press (in wc)		Pressure Atomizing	Air Atomizing	
		Gas scfh	#2 Oil gph			LFS, LHL	Modulation			
JB2-07	2	900 / 2800	10 / 20	3/4	1 1/2"	10 / 14"	13"	Integral	N/A	N/A
JB2-10	2	900 / 3500	10 / 25	1	2"	8 / 14"	9 / 14"	Integral	Optional	2
JB2-15	2	900 / 3500	10 / 25	1 1/2	2"	8 / 14"	9 / 14"	Integral	Optional	2
JB2-20	2	1200 / 4200	12 / 30	2	2"	(4) 12 / 14"	(3) 13 / 14"	Integral	Optional	2
JB2-30	2.5	1200 / 5300	12 / 37.8	3	2 1/2"	N/A	13 / 14"	3/4	Optional	2
JB2-50	2.5	1200 / 6000	12 / 42.8	5	2 1/2"	N/A	2-5 psi	3/4	Optional	2

3. Lower pressures may apply to reduced inputs.

4. 11-14" with IRI and LFS or LHL. 12-14" with IRI and modulation.

The above maximum ratings are based on 0 furnace pressure, an altitude of 1000 feet, 90°F air temperature and 60 HZ electrical supply. Use the following corrections for higher temperatures and altitude. Capacity decreases by 17% for 50 Hertz.

Capacity decreases by 4% for each 1000 feet above 1000 foot altitude.

Capacity decreases by 6% for each 1 inch of furnace pressure.

Capacity decreases by 2% for each 10°F increase in air temperature over 90°F.

Gas input ratings based on 1000 BTU/cu ft. and 0.64 specific gravity. Sizes and pressure will vary with different gas properties.

Oil input ratings are based on 140,000 BTU/gal. for ASTM #2 fuel oil.

The vessel draft must be between -0.1 and +0.1 wc.

Essential Ordering Information and Data:

Power Supply - Confirm 120-60-1 for control circuit and electrical supply for burner motor(s) (voltage, frequency and phase).

Describe Boiler or Heater to be Fired - Including the manufacturer, model number, furnace pressure and furnace size.

Firing Rate - Define firing rates in MBH for gas and GPH for oil.

Fuel to be Burned - Type of gas and/or oil, including the BTU value.

Approval Agency - UL, FM, IRI (GE GAP), CSD-1, NFPA, Mil spec and local codes, if applicable.

Flame Safety Control Preferred - Honeywell or Fireye controls. Gas Train Components Preferred - ASCO/ITT, Honeywell or Landis

Control System - ON-OFF, Low Fire Start, Low High Low, Modulation, Posi-Control. Required Options - Mounting plate, limit controls, etc.

GENERAL TERMS & CONDITIONS OF SALE

GENERAL TERMS & CONDITIONS OF SALE

The following terms and conditions (these "**Terms and Conditions**") shall apply to the purchase and sale of any products, materials, parts or other goods (collectively, "**Goods**") from H.A. Folsom and Associates, Inc. ("**Folsom**"), Toyo Pumps North America, LLC. ("**Toyo**"), and Hevy Pumps Inc. ("**Hevy**" and, together with "**Toyo**" and "**Folsom**", the "**Seller**"). and the performance of any installation, repair, advisory, consulting or other services by Seller (collectively, the "**Services**");

TERMS & CONDITIONS OF SALE

1. Acceptance of Purchase Order: Formal acknowledgment of the purchase order by Seller by return to the purchasing party (the "**Buyer**") of the executed copy, or Seller's commencement of such performance or acceptance of any payment shall constitute acceptance by Seller subject to having the Goods in stock and/or being willing to manufacture the Goods and perform the Services pursuant to these Terms and Conditions. If the Buyer submitted a purchase order to any company, partnership or other entity that directly or indirectly through one or more intermediaries controls, is controlled by or is under common control with Seller (in each case, an "**affiliate**"), or to any field or business consultant, salesman or other contractor of Seller or their respective affiliates, then the Buyer acknowledges that such affiliate, consultant, salesman or other contractor, as the case may be, does not have the authority to bind Seller and the purchase order will not be accepted until the earlier of (i) receipt by the Buyer of an executed copy of the purchase order signed by an officer of Seller, (ii) Seller's commencement of performance under the purchase order or (iii) acceptance by Seller of any payment under the purchase order. Seller's acceptance of the purchase order is conditional upon the Buyer's agreement that these Terms and Conditions govern the relationship between the parties. The terms of any purchase order or quotation signed by the parties and these Terms and Conditions comprise the entire agreement between the parties (this "**Agreement**"). In the event of any conflict or inconsistency between these Terms and Conditions and the terms and conditions contained in the Buyer's order or in any other form issued by the Buyer, whether or not any such form has been acknowledged or accepted by Seller, these Terms and Conditions shall prevail. No waiver, alteration or modification of these Terms and Conditions shall be binding upon Seller unless made in writing and signed by a duly authorized representative of Seller. Fulfillment of Buyer's order does not constitute acceptance of any of Buyer's terms and conditions and does not serve to modify or amend these Terms and Conditions.

2. Materials and Compatibility with Buyer's System or Process: Quotations and recommendations including, but not limited to, materials of construction and compatibility of the Goods with the Buyer's system and process are based on information supplied by the Buyer. The Buyer is responsible for final confirmation of the metallurgical suitability of the construction materials and compatibility of the Goods with the Buyer's system or process. By placing an order further to a quotation, the Buyer acknowledges and agrees that it has confirmed the metallurgical suitability of the construction materials and the compatibility of the Buyer's system and process with the Goods.

Seller expressly disclaims any warranty that the Goods will be compatible with the Buyer's operating system or process, and that the construction materials are metallurgically suitable for the Buyer's purposes. In the event that the Goods are not compatible with the Buyer's operating system or process, and/or that the construction materials are not metallurgically suitable, the Buyer shall be responsible for the cost of all changes in the Goods, and if the Buyer's order is cancelled, Seller shall be reimbursed for all costs and expenses incurred and reasonable profit for performance executed prior to the date of such termination.

3. Taxes: Any taxes, excise duties, levies or other assessments under any existing or future laws which Seller may be required to pay or collect in connection with the order, under any existing or future laws, including any taxes, excise duties, levies or other assessments levied on the sale, purchase, delivery, storage, processing, use or consumption of any other materials necessary for the completion of this order are not included in the purchase price and shall be for the account of the Buyer. The Buyer shall promptly pay the amount thereof to Seller upon demand, or in lieu thereof, furnish Seller with a tax exemption certificate acceptable to the taxing authorities.

4. Payments: For orders of Goods having an aggregate purchase price of less than \$50,000 and orders for Services, Seller's regular terms are net 30 days subject to credit approval and at Seller's discretion. For orders of Goods having an aggregate purchase price equal to or greater than \$50,000, progress payments in accordance with the following milestones shall apply:

Milestone

Acceptance of Purchase Order	15%
Submittal of Approval Drawings	20%
Purchase of Major Components	20%
Goods ready to ship	25%
30 days after Shipment*	20%

*(subject to credit approval and at Seller's discretion)

All milestone payments are due upon receipt of invoice, with the exception of the 30 days after Shipment milestone.

Interest will accrue at the annual rate of 24% per annum to be compounded monthly on the balance due and owing but will not exceed the maximum permitted by law.

Should the Buyer for any reason default in payments due under this Agreement, the Buyer agrees to pay all collection costs and indemnify Seller for all attorneys' fees arising from the default in payment.

5. Shipping: Unless shipping instructions accompany each order and are accepted by Seller, the manner of shipping is at the discretion of Seller. Seller's responsibility for the Goods ceases when they pass into the hands of the carrier at which time the Buyer assumes the risk for the Goods.

6. Damaged Goods: Seller's Goods are carefully inspected and checked for any damage prior to shipment. The Buyer assumes all responsibility for risk relating to loss or damage of Goods once the Goods pass into the hands of the carrier.

7. Delayed Performance: Seller shall not be responsible for delays in shipments or performance of the Services caused by labor difficulties, material shortages, transportation delays, accidents, acts of God or other causes beyond Seller's reasonable control; or for delay caused by the acts or omissions of Seller, its servants, employees, contractors, subcontractors or agents. In any event, Seller shall not be responsible for the Buyer's lost profits or other consequential damages incurred by the Buyer for any delay or failure by Seller to make delivery of Goods or performance of Services under any order, it being agreed that Seller's sole liability shall be to refund any amounts prepaid by the Buyer to Seller on account of such delayed or non-delivered order.

8. Warranties: Seller makes no warranties expressed or implied, other than the following:

- (a) With respect to any equipment and materials which are included in the Goods furnished by Seller, but manufactured by others, the Buyer shall accept in lieu of any liability or guarantees on the part of Seller, the benefits of any guarantees (if any) that are obtained by Seller from such manufacturers or vendors.
- (b) Seller shall not be liable and shall not have any obligation for fair wear and tear, seal failures, damage caused by vibration, failure to properly maintain, damage caused by operating without flow or adequate submersion, damage caused by corrosives, abrasives or foreign objects and other damage, whether or not caused by the improper storage, handling, operation, or maintenance contrary to good practice or instructions in any manuals, or due to the fault, negligence, want of skill or wrongful acts of the Buyer, its employees, agents, contractors or suppliers.
- (c) Seller shall perform the Services in a workmanlike manner consistent with industry standards applicable at the time and place where such Services are performed.
- (d) Products are warranted against defects in material and workmanship for a period of thirty (30) days from the date of delivery. THIS WARRANTY APPLIES ONLY TO GOODS MANUFACTURED BY SELLER OR INCORPORATED BY SELLER AS AN OEM INTO A PRODUCT SYSTEM. OTHER GOODS ARE WARRANTED, IF AT ALL, ONLY BY THEIR MANUFACTURERS. SELLER EXTENDS TO THE BUYER THE STANDARD OR PROPOSED WARRANTY, IF ANY, OFFERED BY THE EQUIPMENT MANUFACTURER. Under this warranty, Seller will repair or replace, at its option, at no charge to the Buyer, the defective Goods at Seller's manufacturing facility, with all shipping charges to be borne by Buyer.
- (e) THERE ARE NO WARRANTIES ON GOODS DAMAGED DUE TO IMPROPER INSTALLATION, OR MAINTENANCE.

The above limited warranties cease to be effective if the Goods are altered or repaired other than by persons authorized or approved by Seller to perform such work. Repairs or replacement deliveries do not interrupt or prolong the term of the warranty. The warranties above cease to be effective if the Buyer fails to operate and use the Goods sold hereunder in a safe and reasonable manner and in accordance with any written instructions from the manufacturer.

9. Exclusivity of Warranties: Seller expressly disclaims to the full extent permitted by law all express, implied, statutory and other warranties, guarantees or representations, including, without limitation, the warranties of merchantability, merchantable quality, durability or fitness for a particular purpose, and non-infringement of proprietary and intellectual property rights.

10. Limitation of Liability: The liability of Seller and their respective affiliates, including but not limited to H.A. Folsom and Associates, Inc., and their respective directors, officers, employees, contractors, subcontractors and agents ("Seller and Others") is limited to the repair, replacement or refund of the original purchase price actually paid by the Buyer for the particular Goods or Services which are the subject of the claim. Except as expressly provided in the foregoing, Seller and Others will not be liable for any loss, damage or expense including, but not limited to, the following: bodily harm to any individual, loss of profits, revenue, interest, loss by reason of shutdown or non-operation, increased expense of operation of the equipment, loss of power system, cost of purchase or replacement power, or claims of Buyer or customers of Buyer for service interruption, or any special, indirect, incidental or consequential damages arising out of this Agreement or any breach thereof, negligence of Seller and Others, the performance of the Services or defect in, failure of, or malfunction of the Goods furnished to the Buyer or the customers of the Buyer. Seller and Others will not be responsible for any special, indirect, consequential or incidental damages or expense of any kind or nature, regardless of the cause, even if Seller and Others have any knowledge regarding the probability of their occurrence.

11. Cancellation or Modification: The Buyer may cancel or modify a shipment of any part thereof only upon Seller receiving written notice seven (7) days prior to the cancellation or modification and upon payment to Seller of reasonable and proper cancellation or modification charges based upon expenses already incurred and commitments made by Seller, including, without limitation, any labor done, material purchased, Services performed and also including Seller's usual overhead and reasonable profit and cancellation charges from Seller's suppliers.

12. Cancellation or Modifications due to Unusual Market Conditions: The Seller will take all possible commercially reasonable precautions to mitigate risk related to gross or unusual market and supply conditions related to commodities/materials, economic tariffs, and sanctions, but reserves the right in such cases to delay, adjust pricing or cancel said order(s), in agreement with Buyer, when such fluctuations make the transaction of supplying said Goods or Services financially unviable. Every effort will be made in cooperation with the Buyer to establish an abatement program which best serves all parties involved.

13. Return of Goods: No credit or refund will be permitted for Goods returned unless Seller's prior written permission has been obtained. If accepted, returned Goods may be subject to a handling or restocking charge.

14. Back Orders: The Buyer agrees that if it has ordered items which are unavailable at the time of the placement of the order, Seller will ship them as soon as they are available or at a later time.

15. Arbitration: If there is any disagreement, dispute or controversy (a "Dispute") between the parties with respect to any matter arising under this Agreement or the construction of this Agreement, then the Dispute shall be referred to and finally resolved by arbitration under the rules of the American Arbitration Association in accordance with its Commercial Arbitration Rules by a sole arbitrator agreed to by the parties. The seat or place of arbitration shall be in Salt Lake City, Utah, United States. The arbitration shall be conducted and the award shall be rendered in the English language. The award of the arbitrator shall be final and binding upon each of the parties and shall not be subject to appeal or judicial review.

16. Governing Law: This Agreement shall be governed by and interpreted in accordance with the laws of the State of Delaware. The United Nations Convention on Contracts for the International Sale of Goods will not apply to the supply of Goods or Services.

17. Exclusion of Liability for Oral Representations: The Buyer acknowledges that none of Seller, their respective affiliates or agents has made any oral or written representations, inducements, or promises that are not expressly contained in this Agreement. The Buyer acknowledges and agrees that ANY ORAL OR WRITTEN REPRESENTATIONS, INDUCEMENTS OR PROMISES MADE BY ANY FIELD OR BUSINESS CONSULTANT, SALESMAN OR OTHER CONTRACTOR OF SELLER OR THEIR RESPECTIVE AFFILIATES ARE EXPRESSION OF OPINION ONLY AND ARE NOT BINDING ON SELLER OR THEIR RESPECTIVE AFFILIATES UNLESS EXPRESSLY CONTAINED HEREIN. NEITHER SELLER NOR ANY OF THEIR RESPECTIVE AFFILIATES IS LIABLE FOR ANY ORAL OR WRITTEN REPRESENTATIONS, INDUCEMENTS OR PROMISES MADE BY ANY FIELD OR BUSINESS CONSULTANT, SALESMAN OR OTHER CONTRACTOR OF SELLER OR THEIR RESPECTIVE AFFILIATES UNLESS EXPRESSLY CONTAINED IN THIS AGREEMENT. This Agreement may be modified only in writing signed by the Buyer and an officer of either Seller. The Buyer acknowledges that any field or business consultant, salesman or other contractor of Seller or its affiliates is not authorized to modify or change any term of this Agreement.

18. Confidentiality: All non-public, confidential or proprietary information of Seller, including but not limited to specifications, samples, patterns, designs, plans, drawings, documents, data, business operations, customer lists, pricing, discounts or rebates, disclosed by Seller to Buyer, whether disclosed orally or disclosed or accessed in written, electronic or other form or media, and whether or not marked, designated or otherwise identified as "confidential" in connection with this Agreement is confidential, solely for the use of performing this Agreement and may not be disclosed or copied unless authorized in advance by Seller in writing. Upon Seller's request, Buyer shall promptly return all documents and other materials received from Seller. Seller shall be entitled to injunctive relief for any violation of this Section. This Section does not apply to information that is: (a) in the public domain; (b) known to Buyer at the time of disclosure; or (c) rightfully obtained by Buyer on a non-confidential basis from a third party.

19. Intellectual Property: Title to, ownership of and all intellectual property rights in, any facilities, designs, equipment, specifications, drawings, formulas, engineering notices, technical data, software, processes, documentation and information used in connection with Seller's supply of the Goods or Services (the "Goods Components") shall be and remain with Seller, or their applicable suppliers or licensors. This Agreement does not grant to the Buyer any intellectual property or other rights or licenses in or to any Goods Components. Buyer shall not, and shall not knowingly permit a third party to, whether directly or indirectly, modify, reverse engineer or disassemble any Goods without the prior written consent of Seller.

20. Severability: If any provision of this Agreement is determined to be invalid, void or unenforceable, in whole or in part, such invalidity, voidance or unenforceability shall attach only to such provision or part thereof, and the remaining part of such provision and all other provisions thereof shall continue in full force and effect.

21. Applicability: This Agreement applies only to this order. Prospective orders may be subject to revised terms and conditions. It is the Buyer's responsibility to request and review Seller's current terms and conditions in respect of prospective orders.

22. Entire Agreement Clause: This Agreement constitutes the entire agreement between the parties, and is subject to no other oral or written proposals, agreements, implied terms, agreements through course of conduct, conditions precedent or understandings whatsoever.

End of General Terms & Conditions of Sale