

EXHIBIT B

ELECTRICAL ABBREVIATIONS

A	AMPERES
AC	6" ABOVE BACKSLASH ABOVE FINISHED FLOOR
AF	ABOVE FINISHED GRADE
AF	AMP FRAME
AI	AMPS INTERRUPTING CAPACITY
ATS	AUTOMATIC TRANSFER SWITCH
AWG	AMERICAN WIRE GAUGE
BD	BOTTOM OF DECK
BS	BOTTOM OF STRUCTURE
C	CEILING MOUNTED CONDUIT
CB	CIRCUIT BREAKER
CF	COMPACT FLUORESCENT
CKT	CIRCUIT
CO	CONDUIT ONLY, PROVIDE PULL- LINE
CT	CURRENT TRANSFORMER
CTL	CONTROL
DC	DIRECT CURRENT
DEM	DEMOLITION
DET	DETAIL
DTT	DOUBLE TWIN TUBE
E	EMERGENCY
EC	EXISTING
EC	ELECTRICAL CONTRACTOR
EL	EMERGENCY LIGHT
F	FUSE
FI	FUTURE
FACP	FIRE ALARM CONTROL PANEL
GGND	GROUND
GFI	GROUND FAULT CIRCUIT INTERRUPTER
GI	GROUND FAULT INTERRUPTER
HH	HAND HOLE
HID	HIGH INTENSITY DISCHARGE
HOA	HAND-OFF-AUTO
HPS	HIGH PRESSURE SODIUM
HVAC	HEATING, VENTILATION, & AIR CONDITIONING
IG	ISOLATED GROUND
IPCO	IDAHO POWER COMPANY
J-BOX	JUNCTION BOX
KA	KILOAMP
KVA	KILO VOLT-AMP
KW	KILOWATT
KWH	KILOWATT HOUR
LCP	LIGHTING CONTROL PANEL
MB	MAIN BREAKER
MCR	MAIN CIRCUIT BREAKER
MCC	MOTOR CONTROL CENTER
MDP	MAIN DISTRIBUTION PANEL
MLO	MAIN LUGS ONLY
MMC	MODULAR METERING CENTER
MH	METAL HUB
MSB	MAIN SWITCH BOARD
MTG	MOUNTING
N	NEUTRAL
(N)	NEW
NC	NORMALLY CLOSED
NEL	NATIONAL ELECTRICAL CODE
NIC	NOT IN CONTRACT
NL	NIGHT LIGHT
NO	NORMALLY OPEN
NTS	NOT TO SCALE
OH	OVERHEAD
OS	OCCUPANCY SENSOR
P	POLES
PVC	PHOTO-CONTROL
PVC	POLYVINYL CHLORIDE
PWR	POWER
RE	REFERENCE
REC	RECEPTACLE
(R)	RELOCATED
SF	SQUARE FEET
TBD	TO BE DETERMINED
TDR	TIME DELAY RELAY
TK	TOE KICK
TSP	TWISTED SHIELDED PAIR
TTT	TRIPLE TUBE
TTB	TELEPHONE TERMINAL BOARD
(TYP)	TYPICAL
UC	UNDERCABINET
UG	UNDERGROUND
U.N.O.	UNLESS NOTED OTHERWISE
V	VOLT
VA	VOLT-AMPERE
W	WATT
WG	WIRE GUARD
WP	WEATHER PROOF/NEMA 3R
PROVIDED/ PROVIDE BY	PROVIDE AND INSTALL / PROVIDED AND PROVIDE BY
INSTALLED/ INSTALL	INSTALLED BY / PROVIDED AND INSTALL
NOTE:	THIS IS A STANDARD LIST OF COMMONLY USED ELECTRICAL ABBREVIATIONS. SOME OF THE ABBREVIATIONS SHOWN ABOVE MAY NOT BE USED IN THIS DRAWING PACKAGE.

ELECTRICAL LEGEND - LIGHTING

REFERENCE FIXTURE SCHEDULE FOR MOUNTING TYPE, MOUNTING HEIGHT, AND FIXTURE TYPE.	DOUBLE FACE EXIT SIGN, CEILING MOUNTED, PROVIDE UNSWITCHED CONDUCTOR.
WALL MOUNTED DOUBLE FACE EXIT SIGN PROVIDE UNSWITCHED CONDUCTOR. MOUNT AT +8'-0" UNO.	SINGLE FACE EXIT SIGN, CEILING MOUNTED PROVIDE UNSWITCHED CONDUCTOR.
WALL MOUNTED SINGLE FACE EXIT SIGN PROVIDE UNSWITCHED CONDUCTOR. MOUNT AT +8'-0" UNO.	ARROW INDICATES DIRECTION TO BE SHOWN ON SIGN.
1'X1' LIGHT FIXTURE.	1'X1' LIGHT FIXTURE.
1'X1' LIGHT FIXTURE. PROVIDE EMERGENCY BATTERY BACKUP CONNECTED TO AN UNSWITCHED CONDUCTOR.	1'X1' LIGHT FIXTURE.
2'X4' LIGHT FIXTURE.	2'X4' LIGHT FIXTURE.
2'X4' LIGHT FIXTURE. PROVIDE EMERGENCY BATTERY BACKUP CONNECTED TO AN UNSWITCHED CONDUCTOR.	2'X4' LIGHT FIXTURE.
2'X2' LIGHT FIXTURE.	2'X2' LIGHT FIXTURE.
2'X2' LIGHT FIXTURE. PROVIDE EMERGENCY BATTERY BACKUP CONNECTED TO AN UNSWITCHED CONDUCTOR.	2'X2' LIGHT FIXTURE.
DIRECT/INDIRECT LIGHT FIXTURE. SEE SCHEDULE FOR LENGTH.	DIRECT/INDIRECT LIGHT FIXTURE. SEE SCHEDULE FOR LENGTH.
STRIP LIGHT FIXTURE. SEE SCHEDULE FOR LENGTH.	STRIP LIGHT FIXTURE. SEE SCHEDULE FOR LENGTH.
EMERGENCY BATTERY BACKUP CONNECTED TO AN UNSWITCHED CONDUCTOR.	WALL MOUNTED LIGHT FIXTURE.
WALL MOUNTED LIGHT FIXTURE. PROVIDE EMERGENCY BATTERY BACKUP CONNECTED TO AN UNSWITCHED CONDUCTOR.	RECESSED LIGHT FIXTURE.
RECESSED LIGHT FIXTURE. PROVIDE EMERGENCY BATTERY BACKUP CONNECTED TO AN UNSWITCHED CONDUCTOR.	ROUND LIGHT FIXTURE.
ROUND LIGHT FIXTURE. PROVIDE EMERGENCY BATTERY BACKUP CONNECTED TO AN UNSWITCHED CONDUCTOR.	WALL MOUNTED LIGHT FIXTURE.
WALL MOUNTED LIGHT FIXTURE.	WALL MOUNTED EMERGENCY LIGHT FIXTURE. PROVIDE EMERGENCY BATTERY BACKUP CONNECTED TO AN UNSWITCHED CONDUCTOR.
POLE LIGHT 1 HEAD WITH POLE.	POLE LIGHT 1 HEAD WITH POLE.
TIME CLOCK.	PHOTO CONTROL CELL LOCATED 12" ABOVE ROOF FACING NORTH.
OCCUPANCY SENSOR. PROVIDE RELAYS AND POWER PACKS AS REQUIRED.	LED DRIVER.
EMERGENCY EGRESS LIGHTING WITH OUT FIXTURE HEADS. CONNECT TO AN UNSWITCHED CONDUCTOR.	EMERGENCY EGRESS LIGHTING. CONNECT TO AN UNSWITCHED CONDUCTOR.
EMERGENCY EGRESS LIGHTING. PROVIDE UNSWITCHED CONDUCTOR. MOUNT AT +8'-0" UNO.	CEILING MOUNTED. DOUBLE FACE EXIT SIGN WITH EMERGENCY EGRESS LIGHTING. PROVIDE UNSWITCHED CONDUCTOR.
CEILING MOUNTED. SINGLE FACE EXIT SIGN WITH EMERGENCY EGRESS LIGHTING. PROVIDE UNSWITCHED CONDUCTOR.	CEILING MOUNTED. DOUBLE FACE EXIT SIGN WITH EMERGENCY EGRESS LIGHTING. PROVIDE UNSWITCHED CONDUCTOR.
INDICATES FIXTURE TYPE. REFER TO FIXTURE SCHEDULE.	EXTERIOR WALL PACK.
EMERGENCY EXTERIOR WALL PACK. PROVIDE EMERGENCY BATTERY BACKUP CONNECTED TO AN UNSWITCHED CONDUCTOR.	

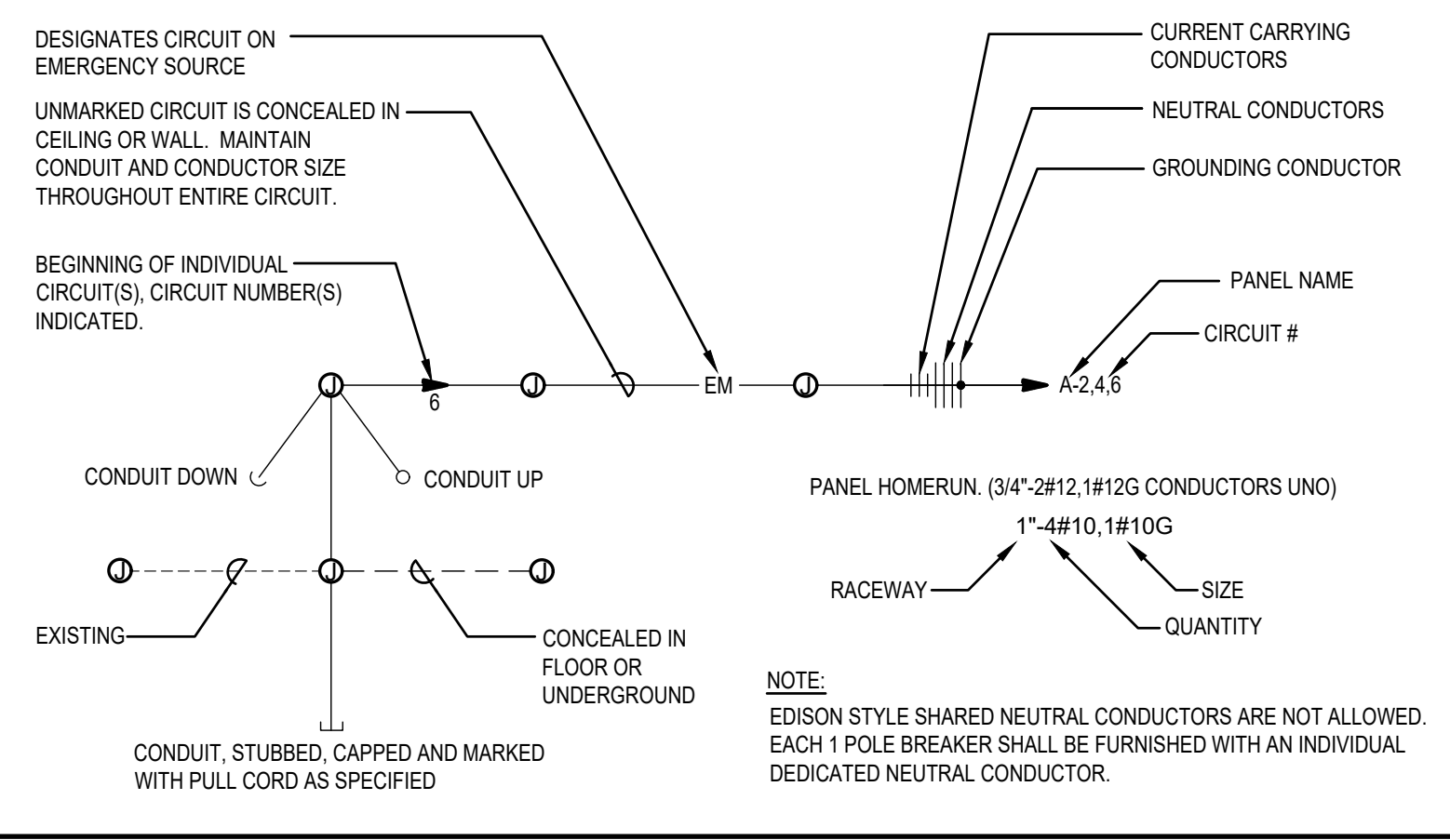
ELECTRICAL GENERAL NOTES

- A. THESE ELECTRICAL DRAWINGS ARE DIAGRAMMATIC IN NATURE. THEREFORE, THE ELECTRICAL CONTRACTOR SHALL COORDINATE ALL ELECTRICAL EQUIPMENT AND DEVICE LOCATIONS WITH ARCHITECTURAL, MECHANICAL, AND PLUMBING DIVISIONS PRIOR TO ROUGH-IN. REFER TO AND COORDINATE WITH ARCHITECTURAL, MECHANICAL, AND PLUMBING DRAWINGS FOR ADDITIONAL WORK THAT IS REQUIRED BY THE ELECTRICAL CONTRACTOR.
- B. ALL CONDUIT AND JUNCTION BOXES ARE TO BE CONCEALED UNLESS LOCATED WITHIN DEDICATED ELECTRICAL OR MECHANICAL ROOMS. USE OF SURFACE MOUNTED RACEWAYS IN ALL OTHER SPACES MUST BE APPROVED BY THE ARCHITECT FOR EACH LOCATION. WHERE SURFACE RACEWAYS ARE APPROVED, UTILIZE WIREMOLD OR APPROVED EQUAL. SURFACE MOUNTED RACEWAYS PAINTED TO MATCH SURROUNDING WALLS.
- C. REFER TO ARCHITECTURAL ELEVATIONS FOR OUTLET HEIGHTS WHERE THE SPECIFIC OUTLET HEIGHT IS NOT INDICATED. REFER TO THE ELECTRICAL LEGEND FOR THE DEFAULT OUTLET HEIGHT WHEN NOT INDICATED ON ELEVATIONS OR ON AT THE DEVICES.
- D. PROVIDE PULL-LINE IN ALL EMPTY CONDUITS.
- E. TERMINATE ALL LOW-VOLTAGE CONDUITS WITH INSULATED THROAT BUSHING.
- F. MECHANICAL EQUIPMENT INDICATED IS SHOWN IN AN APPROXIMATE LOCATION. COORDINATE EXACT LOCATION WITH MECHANICAL CONTRACTOR PRIOR TO ROUGH-IN.
- G. THE ELECTRICAL DEMOLITION DRAWING(S) PROVIDED ARE INTENDED TO ASSIST THE ELECTRICAL CONTRACTOR IN ESTABLISHING AREAS REQUIRING DISCONNECTION, REMOVAL, OR RELOCATION OF ELECTRICAL EQUIPMENT, OUTLETS, WIRING DEVICES, FIXTURES, ETC. AND MAY NOT INDICATE ALL DEVICES OR THE FULL EXTENT OF DEMOLITION AND RECONNECTION WHICH MAY BE REQUIRED. THE ELECTRICAL CONTRACTOR SHALL VISIT THE JOB SITE AND THOROUGHLY EXAMINE ALL REQUIRED DEMOLITION WORK AND INCLUDE ALL LABOR AND INCIDENTALS THAT WILL BE NECESSARY TO PERFORM DEMOLITION RECONNECTION AND TEMPORARY POWER CONNECTIONS IN THE BID.
- H. ALL ELECTRICAL DEVICES AND WALLS INDICATED ON THE ELECTRICAL DEMOLITION DRAWING(S) ARE TO REMAIN UNLESS OTHERWISE NOTED.

DEVICES

SI	SWITCH, TYPE AS INDICATED. +46" AFF
2	DOUBLE POLE
3	3-WAY
4	4-WAY
K	KEYED
P	PILOT LIGHT
D	DIMMER
LV	ON/OFF
LVS	LOW VOLTAGE SCENE CONTROL AS NOTED
OS	OCCUPANCY SENSOR
OR	LOW VOLTAGE, MOMENTARY OVERRIDE
VS	VACUANCY SENSOR
a	SUPERSCRIPT INDICATES LIGHTS TO BE SWITCHED TOGETHER
SS	DUAL LEVEL SWITCHING, INSIDE AND OUTSIDE LAMPS OF FIXTURE TO BE SWITCHED SEPARATELY.
SS	DUAL LEVEL SWITCHING WITH OCCUPANCY SENSOR, INSIDE AND OUTSIDE LAMPS OF FIXTURE TO BE SWITCHED SEPARATELY.
SS	OCCUPANCY SENSOR WITH MANUAL DIMMING, SET FOR 50% AUTOMATIC ON, AUTOMATIC OFF, WITH MANUAL DIMMING.
⚡	DUPLEX CONVENIENCE OUTLET, +18" AFF UNO
⚡	PANELBOARD, SEE SCHEDULE FOR TYPE.
⚡	EQUIPMENT CABINET, SURFACE MOUNTED
⚡	EQUIPMENT CABINET FLUSH MOUNTED

CIRCUITING SYMBOLS



NOTE: THIS IS A STANDARD LIST OF COMMONLY USED ELECTRICAL SYMBOLS. SOME OF THE SYMBOLS SHOWN, MAY NOT HAVE BEEN USED IN THIS DRAWING PACKAGE.

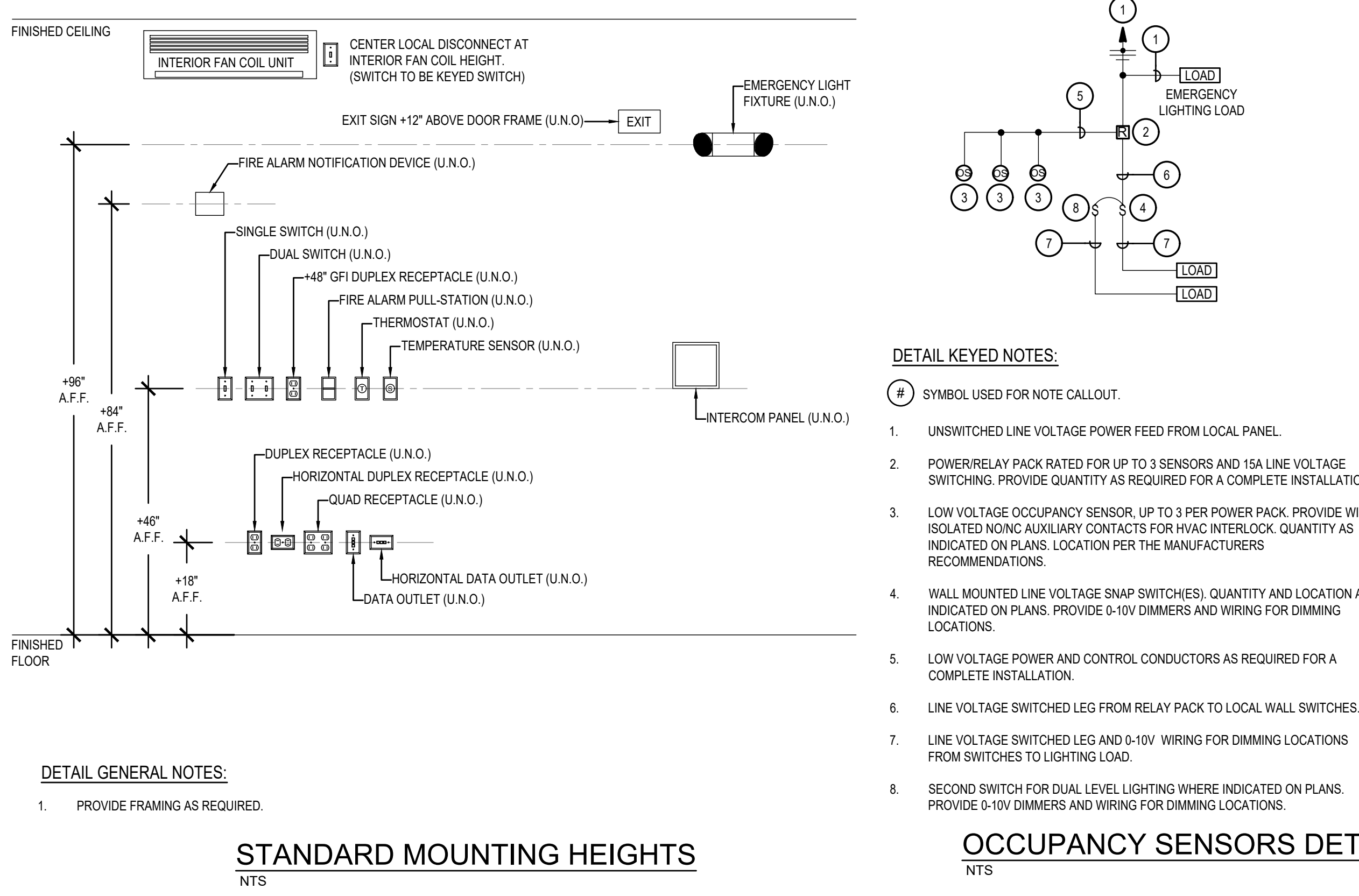
LIGHTING FIXTURE SCHEDULE (23-150)						
REFER TO PLANS FOR BASE BID AND BID ALTERNATES						
TYPE	DESCRIPTION	MTG	LAMPS	WATTS	MFG. & CATALOG NUMBER	OR EQUAL BY
FL1	1'X4' RECESSED, DRY WALL ADAPTER, PATCH AND REPAIR CEILING AS REQUIRED	RECESSED CEILING	LED 3000 LUMENS 4000K	22.7	LITHONIA NO. BLT4-30L-ADP-G21-LP840-DGA14 PROVIDE WITH FLANGE KIT FOR RECESSED CEILING INSTALLATION	1
GL1	2'X4' GRID, DIMMABLE PROVIDE EMERGENCY OPTION WEHRE EMERGENCY ON PLANS	RECESSED GRID	LED 4000 LUMENS 4000K	31.7	LITHONIA NO. 2BL14-40L-ADP-G21-LP840 (PROVIDE WITH EL14LSL OPTION FOR EMERGENCY FIXTURES)	1
GL2	2'X2' GRID, DIMMABLE PROVIDE EMERGENCY OPTION WEHRE EMERGENCY ON PLANS	RECESSED GRID	LED 3390 LUMENS 4000K	26.5	LITHONIA NO. 2BL12-33L-ADP-G21-LP840 (PROVIDE WITH EL14LSL OPTION FOR EMERGENCY FIXTURES)	1
GL3	2'X4' GRID, DIMMABLE, ONBOARD FIXTURE LEVEL CONTROL	RECESSED GRID	LED 4000 LUMENS 4000K	31.7	LITHONIA NO. 2BL14-40L-ADP-EZ1-LP840-N100-NESPD7	1,2
ID1	4' STRIP RGB, DMX CONTROLLED DIRECT LIGHT CONFIGURATION, MOUNTED INVERTED IN EXISTING TROUGH	SURFACE MOUNTED	LED 560 TUNABLE	20	ALW NO. SP4SMB-S4-RGB-NO CRI/CCT-DMX-SW-UNV	1,3
ID1B	4' STRIP, TUNABLE WHITE, ROUND DIFFUSE LENS MOUNTED INVERTED IN EXISTING TROUGH	SURFACE MOUNTED	LED 4000 LUMENS TUNABLE	37	LITHONIA NO. CLX148-4000LM-SEF-RDL-MVOLT-EDAB-TUWH-PROR-NL-80CRI	1,4
ID2	8' STRIP RGB, DMX CONTROLLED DIRECT LIGHT CONFIGURATION, MOUNTED INVERTED IN EXISTING TROUGH	SURFACE MOUNTED	LED 1120 TUNABLE	40	ALW NO. SP4SMB-S8-RGB-NO CRI/CCT-DMX-SW-UNV	1,3
ID2B	8' STRIP, TUNABLE WHITE, ROUND DIFFUSE LENS MOUNTED INVERTED IN EXISTING TROUGH	SURFACE MOUNTED	LED 8000 LUMENS TUNABLE	63.7	LITHONIA NO. CLX196-8000LM-SEF-RDL-MVOLT-EDAB-TUWH-PROR-NL-80CRI	1,4
RR1	10" ROUND RECESSED, LED DOWNLIGHT, DIMMABLE	RECESSED	LED 1500 LUMENS 4000K	17.5	LITHONIA NO. LDN6-40/15-L06-AR-LSS-MVOLT-G21	1
RR2	10" ROUND RECESSED, LED DOWNLIGHT, DIMMABLE	CEILING RECESSED	LED 1910 LUMENS 4000K	19	LITHONIA NO. LBR10-15LM-40K-AR-LSS-MWD-MVOLT-UGZ	1
RR3	12" ROUND RECESSED, LED DOWNLIGHT, DIMMABLE	CEILING RECESSED	LED 1205 LUMENS 4000K	13.7	INDY NO. LRT12-15LM-40K-MVOLT-G4-80CRI-ZTN-LP-CD-WET	1
RR6	6" ROUND RECESSED, LED DOWNLIGHT, DIMMABLE, ONBOARD FIXTURE LEVEL CONTROL	CEILING RECESSED	LED 1500 LUMENS 4000K	17.5	LITHONIA NO. LDN6-40/15-L06-AR-LSS-MVOLT-G21-NPP16D	1,2
SL3	4' STRIP FLAT DIFFUSE LENS	SURFACE MOUNTED	LED 3000 LUMENS 4000K	18.5	LITHONIA NO. CLX48-3000LM-SEF-FDL-MVOLT-G210-40K-80CRI	1
SL4	8' STRIP FLAT DIFFUSE LENS	SURFACE MOUNTED	LED 6000 LUMENS 4000K	63.7	LITHONIA NO. CLX96-6000LM-SEF-FDL-MVOLT-G210-40K-80CRI	1
SL5	2' STRIP FLAT DIFFUSE LENS	SURFACE MOUNTED	LED 1500LUMENS 4000K	10.9	LITHONIA NO. CLX24-1500LM-SEF-FDL-MVOLT-G210-40K-80CRI	1
SL6	4' STRIP FLAT DIFFUSE LENS	CHAIN HUNG 15'-6" AFF	LED 4000 LUMENS 4000K	31.8	LITHONIA NO. CLX48-4000LM-SEF-FDL-MVOLT-G210-40K-80CRI-HC36	1
SL7	4' STRIP FLAT DIFFUSE LENS	CHAIN HUNG 10'-0" AFF	LED 3000 LUMENS 4000K	18.5	LITHONIA NO. CLX48-3000LM-SEF-FDL-MVOLT-G210-40K-80CRI-ZACVH	1
SL8	8' STRIP FLAT DIFFUSE LENS	CHAIN HUNG 10'-0" AFF	LED 6000 LUMENS 4000K	63.7	LITHONIA NO. CLX96-6000LM-SEF-FDL-MVOLT-G210-40K-80CRI-ZACVH	1
SL8A	8' STRIP FLAT DIFFUSE LENS	CHAIN HUNG 10'-0" AFF	LED 6000 LUMENS 4000K	63.7	LITHONIA NO. CLX96-6000LM-SEF-FDL-MVOLT-G210-30K-80CRI-ZACVH	1
WB1	4' WALL MOUNT	WALL MOUNTED	LED 2000 LUMENS 4000K	18.7	LITHONIA NO. WL4-20L-EZ1-LP840	1
WB1A	4' WALL MOUNT	WALL MOUNTED	LED 2000 LUMENS 3000K	18.7	LITHONIA NO. WL4-20L-EZ1-LP830	1
WB2	2' WALL MOUNT	WALL MOUNTED	LED 1200 LUMENS 4000K	12.2	LITHONIA NO. WL2-12L-EZ1-LB840 (VERTICALLY MOUNTED WHERE INDICATED ON LIGHTING PLANS)	1
WP1	4' EXTERIOR SURFACE MOUNT	EXTERIOR SURFACE MOUNTED	LED 5383 LUMENS 3500K	47	PROGRESS LIGHTING NO. PCV1T-LED SERIES	1
LIGHTING FIXTURE SCHEDULE NOTES:						
1. SUBSTITUTIONS WILL BE ALLOWED IF SUBMITTED PRIOR TO BID DATE BY THE GREATER OF: 7 BUSINESS DAYS OR THE TIME PERIOD SPECIFIED BY DIVISION 1 SPECIFICATIONS, AND IF DEEMED EQUAL BY THE ENGINEER. THE CONTRACTOR IS RESPONSIBLE FOR ENSURING SUBSTITUTED FIXTURES MEET OR EXCEED THE SPECIFICATIONS OF THE FIXTURES SPECIFIED.						
2. FIXTURE TO BE PROVIDED WITH ON-BOARD DIMMING CONTROL FOR CONTROL BY THE CONTROL SYSTEM IN THE ROOM(S) LOCATED. ALL FIXTURES TO BE INTERCONNECTED WITH EACH OTHER AND TO THE CONTROL SYSTEM WITH PRE-MANUFACTURED AND TESTED CABLING. FIELD ASSEMBLED CABLES ARE NOT ALLOWED.						
3. FIXTURES TO HAVE DMX CONTROL BY GROUPS. PROVIDE PRE-MANUFACTURED AND TESTED DMX CABLING BETWEEN EACH FIXTURE AND TO THE CORRESPONDING DMX CONTROL DEVICES. FIELD ASSEMBLED CABLES ARE NOT ALLOWED.						
4. FIXTURES TO HAVE 0-10V DIMMING CONTROL AND TUNABLE WHITE CONTROL. PROVIDE ALL CABLING, DEVICES AND PROGRAMMING AS REQUIRED.						

COMcheck Software Version 4.1.5.5 Interior Lighting Compliance Certificate

Project Information	Energy Code: 2018 IECC Project Title: Skilled Nursing Corridor Addition Project Type: Addition	Designer/Contractor: Musgrove Engineering 234 S. Whisperwood Way Boise, ID 83709 208-384-0585
Construction Site:	Owner/Agent:	
Allowed Interior Lighting Power		
Area Category	B Floor Area (sq ft)	C Allowed Watts (ft ²)
1-Corridor Addition (Health Care-Clinic)	1550	0.82 1271
Total Allowed Watts = 1271		
Proposed Interior Lighting Power		
Fixture ID : Description / Lamp / Wattage Per Lamp / Ballast	A	B Lamps/ Fixture
1-Corridor Addition (Health Care-Clinic) RR1: RECESSED CAN, Other SL1: 4' STRIP LIGHT, Other	1 45 22 1012 1 7 32 223	1 7 32 223
Total Proposed Watts = 1235		
Interior Lighting PASSES: Design 3% better than code		
Interior Lighting Compliance Statement		
Compliance Statement: The proposed interior lighting design represented in this document is consistent with the building plans, specifications, and other calculations submitted with this permit application. The proposed interior lighting systems have been designed to meet the 2018 IECC requirements in COMcheck Version 4.1.5.5 and to comply with any applicable mandatory requirements listed in the Inspection Checklist.		
Name - Title	Signature	Date

ENERGY CODE COMMISSIONING COMPLIANCE NOTES

- SECTION 408 SYSTEM COMMISSIONING
- IT SHALL BE THE ELECTRICAL CONTRACTOR'S RESPONSIBILITY TO PROVIDE ALL BELOW NOTED DOCUMENTS WITHIN 90 DAYS OF CERTIFICATE OF OCCUPANCY:
- A. AS-BUILT DRAWINGS - DRAWINGS SHALL INCLUDE THE LOCATION AND PERFORMANCE DATA OF ALL PIECES OF MECHANICAL EQUIPMENT.
- B. OPERATING AND MAINTENANCE MANUALS - MANUALS SHALL INCLUDE THE FOLLOWING:
- SUBMITTAL DATA ON ALL PIECES OF EQUIPMENT REQUIRING MAINTENANCE
 - MANUFACTURER'S OPERATIONS AND MAINTENANCE DATA ON ALL PIECES OF EQUIPMENT. ROUTINE MAINTENANCE ACTIONS SHALL BE CLEARLY IDENTIFIED.
 - NAME AND ADDRESS AND PHONE NUMBER OF AT LEAST ONE (1) SERVICE PROVIDER.
 - LIGHTING CONTROL SYSTEMS MAINTENANCE AND CALIBRATION INFORMATION INCLUDING WIRING DIAGRAMS, EQUIPMENT AND SYSTEM SCHEMATICS, AND CONTROL SEQUENCES OF OPERATIONS. DESIRED OR FIELD DETERMINED SETPOINTS SHALL BE PERMANENTLY RECORDED ON CONTROL DRAWINGS AT ALL CONTROL DEVICES, OR FOR DIGITAL CONTROL SYSTEMS, IN THE SYSTEM PROGRAMMING INSTRUCTIONS.
 - A NARRATIVE ON HOW EACH LIGHTING SYSTEM IN INTENDED TO OPERATE, INCLUDING RECOMMENDED SETPOINTS.
- C. LIGHTING SYSTEM FUNCTIONAL TESTING REQUIREMENTS
- FUNCTIONAL TESTING - ALL AUTOMATIC LIGHTING CONTROL SYSTEM SHALL BE FULLY TESTED TO ENSURE THE CONTROL HARDWARE AND SOFTWARE ARE CALIBRATED, ADJUSTED, PROGRAMMED, AND IN PROPER WORKING CONDITION IN ACCORDANCE WITH THE CONSTRUCTION DOCUMENTS AND MANUFACTURER'S INSTALLATION INSTRUCTIONS.
- WHERE OCCUPANT SENSORS, TIME SWITCHES, PROGRAMMABLE CONTROLS, PHOTOSENSORS OR DAYLIGHTING CONTROLS ARE INSTALLED, THE FOLLOWING PROCEDURES SHALL BE PERFORMED:
- CONFIRM THAT THE PLACEMENT, SENSITIVITY AND TIME-OUT ADJUSTMENTS FOR OCCUPANT SENSORS YIELD ACCEPTABLE PERFORMANCE.
 - CONFIRM THAT THE TIME SWITCHES AND PROGRAMMABLE SCHEDULE CONTROLS ARE PROGRAMMED TO TURN THE LIGHTS OFF.
 - CONFIRM THAT THE PLACEMENT AND SENSITIVITY ADJUSTMENTS FOR PHOTOSENSOR CONTROLS REDUCE ELECTRIC LIGHT BASED ON THE AMOUNT OF USABLE DAYLIGHT IN THE SPACE AS SPECIFIED.
- D. FINAL LIGHTING SYSTEM FUNCTIONAL REPORT - A REPORT OF TEST PROCEDURES AND RESULTS IDENTIFIED AS THE "FINAL LIGHTING CONTROL REPORT" SHALL BE DELIVERED TO THE BUILDING OWNER. THE REPORT SHALL INCLUDE THE FOLLOWING:
- LIST OF FUNCTIONAL TESTS USED DURING THE COMMISSIONING PROCESS ON EACH PIECE OF EQUIPMENT.
 - RESULTS OF ALL FUNCTIONAL TESTS ON ALL PIECES OF EQUIPMENT.
 - LIST OF DEFICIENCIES FOUND AND CORRESPONDING CORRECTIVE MEASURES EITHER IMPLEMENTED OR PROPOSED ON EACH PIECE OF EQUIPMENT.
 - LIST OF EQUIPMENT NOT ABLE TO BE FUNCTIONALLY TESTED DUE TO CURRENT CLIMATE CONDITIONS. THESE PIECES OF EQUIPMENT WILL FUNCTIONALLY TESTED ONCE CLIMATE CHANGES ALLOW.



STANDARD MOUNTING HEIGHTS

OCCUPANCY SENSORS DETAIL

DATE	25-03-27
REVISIONS	25-03-20
NO.	1
ADDITION #1	2
ADDITION #2	

MUSGROVE ENGINEERING, P.A.
234 S. Whisperwood Way
Boise, Idaho 83709
208-384-0585
musgrovepa.com

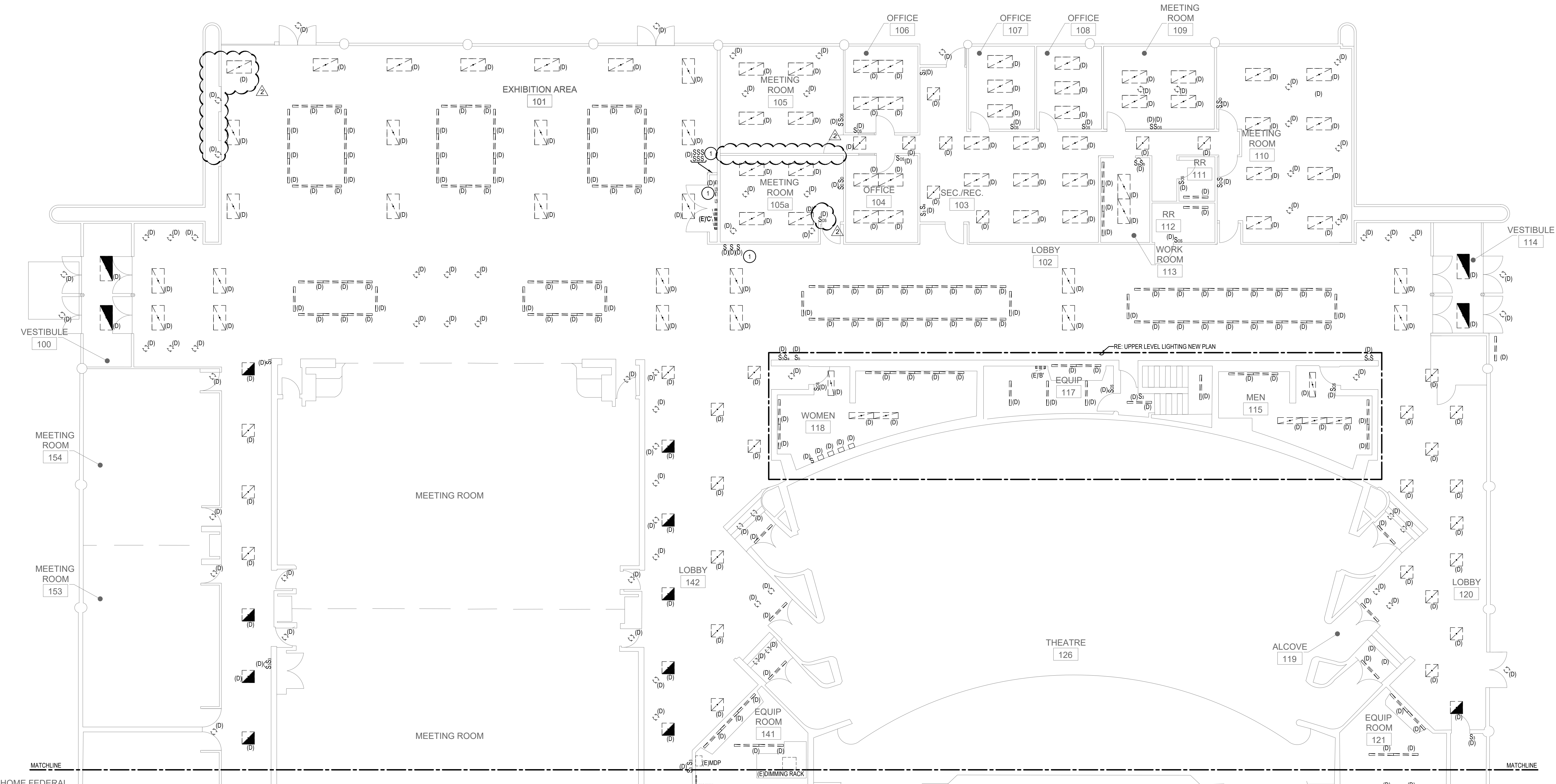
PROFESSIONAL ENGINEER
No. 27168
JULY 2002
STATE OF IDAHO
TRAID MASON

OVER 40 YEARS OF EXCELLENCE

NAMPA CIVIC CENTER LIGHTING UPGRADE - PHASE 2
311 3RD ST.
NAMPA, ID

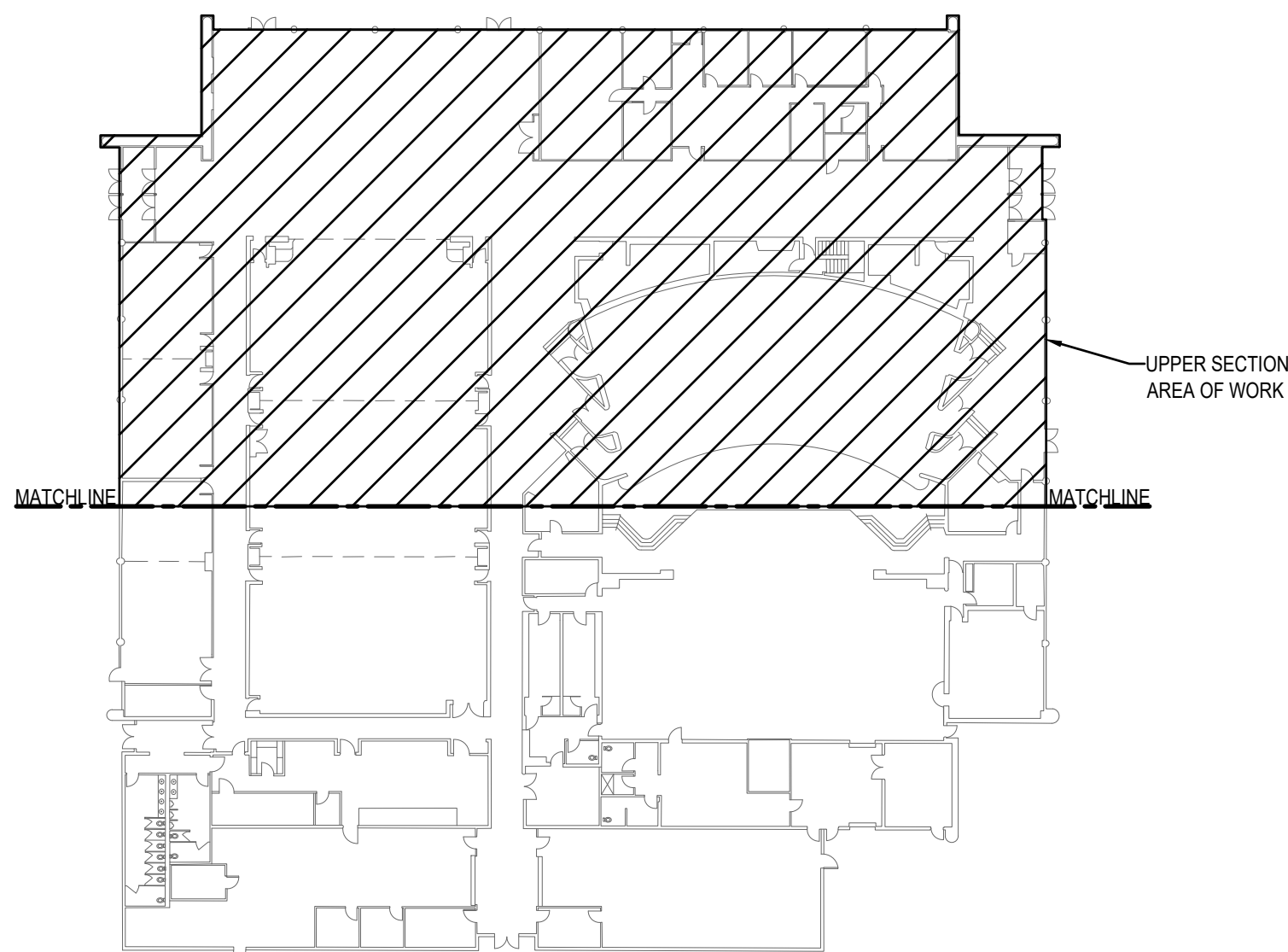
PROJECT	23-150
DRAWN	EH
CHECKED	TM
DATE	25-2-28
SCALE	AS NOTED
SHEET	

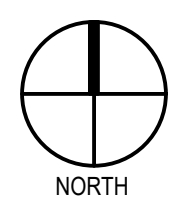
E0.0

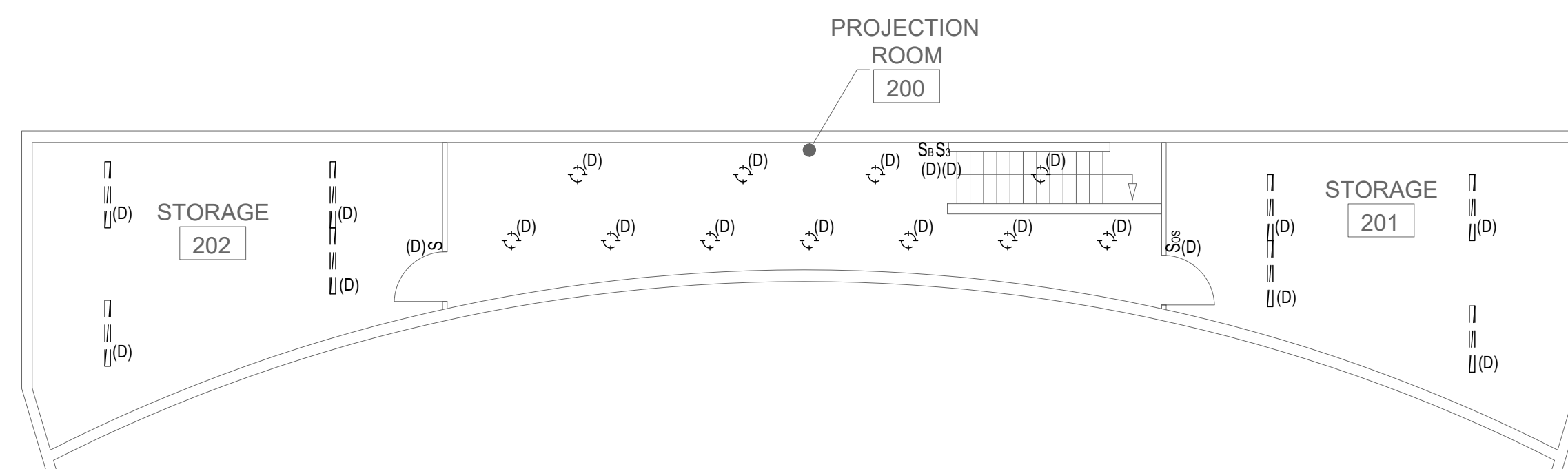


 NORTH SECTION LIGHTING DEMO PLAN
SCALE 1/8" = 1'-0"

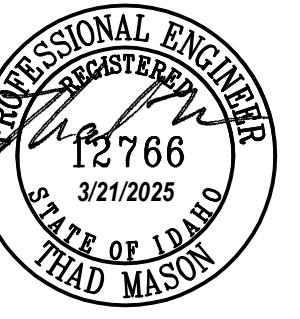
- GENERAL NOTES:**
- A. ALL EXISTING LIGHTING AND LIGHTING CONTROL DEVICES INDICATED BY (D) TO BE REMOVED AND REPLACED UNO. ALL UNUSED CONDUIT AND CONDUCTORS TO BE REMOVED UNO.
- KEYED NOTES:**
- ① SYMBOL USED FOR NOTE CALLOUT.
1. EXISTING LIGHTING CONTROLS TO BE REMOVED. REMOVE ALL UNUSED CONDUIT AND CONDUCTORS. PATCH AND REPAIR THE WALL TO MATCH THE EXISTING WALL IN THIS AREA.



 KEY PLAN
NTS



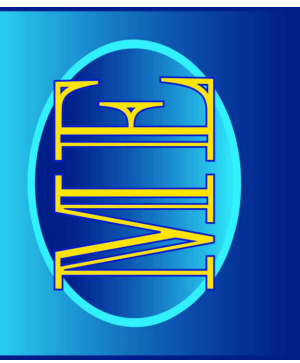
 UPPER LEVEL DEMO LIGHTING PLAN
SCALE 1/8" = 1'-0"



MUSGROVE
ENGINEERING, P.A.
224 S. Whisperwood Way
Boise, Idaho 83709
208.384.0385
musgrovepa.com

645 W. 25TH ST.
IDAHO FALLS, IDAHO 83402
208.322.2862

OVER 40 YEARS OF EXCELLENCE

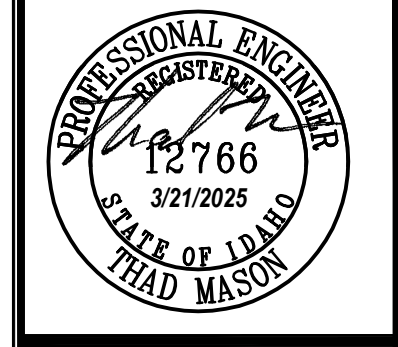


**NAMPA CIVIC CENTER
LIGHTING UPGRADE - PHASE 2
311 3RD ST.
NAMPA, ID**

PROJECT 23-150
DRAWN EH
CHECKED TM
DATE 25-2-28
SCALE AS NOTED
SHEET

E1.0

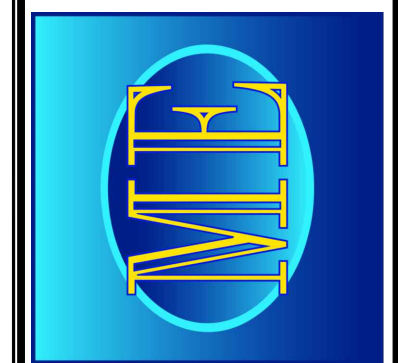
NO.	REVISIONS	DATE
1	ADDENDUM #1	25-03-07
2	ADDENDUM #2	25-03-20



MUSGROVE
ENGINEERING, P.A.
224 S. Whippenwood Way
Boise, Idaho 83709
208.344.0385
musgrovepa.com

645 W. 25TH ST.
IDAHO FALLS, IDAHO 83402
208.322.2862

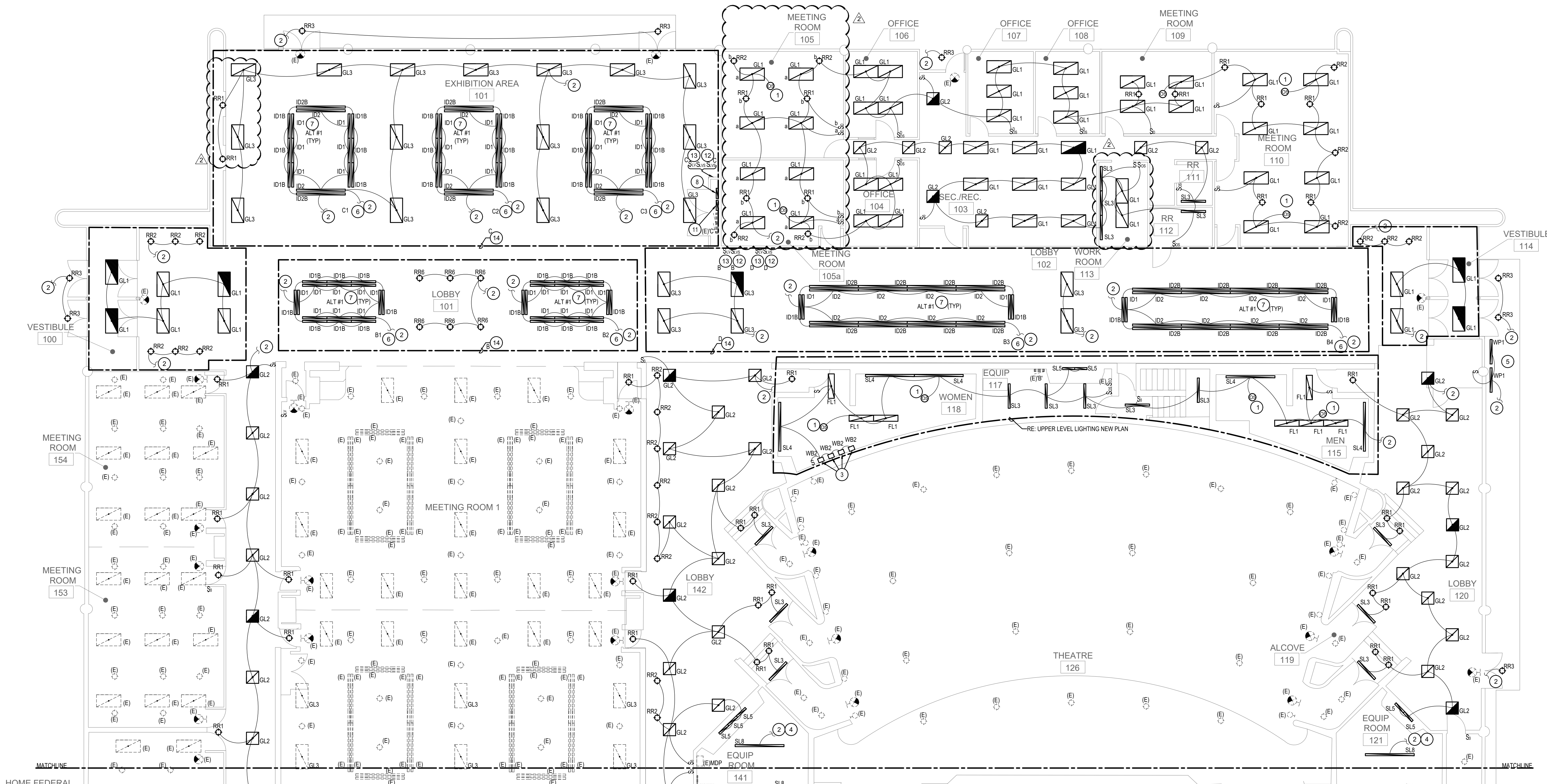
OVER 40 YEARS OF EXCELLENCE



**NAMPA CIVIC CENTER
LIGHTING UPGRADE - PHASE 2
311 3RD ST.
NAMPA, ID**

PROJECT	23-150
DRAWN	EH
CHECKED	TM
DATE	25-2-28
SCALE	AS NOTED
SHEET	

E2.0

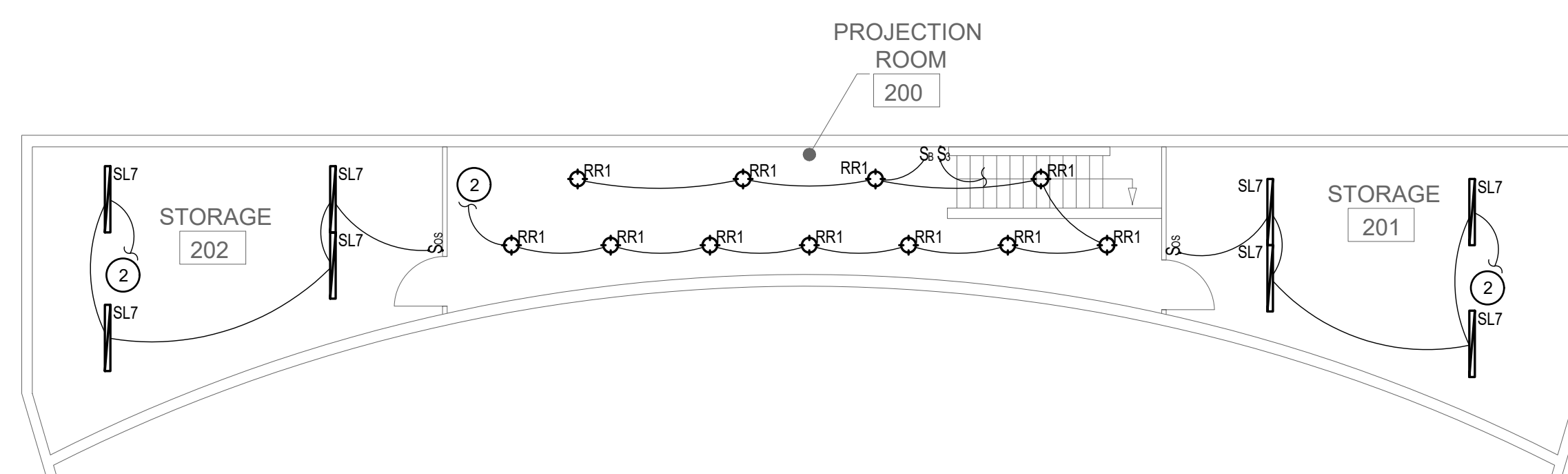


KEYED NOTES:

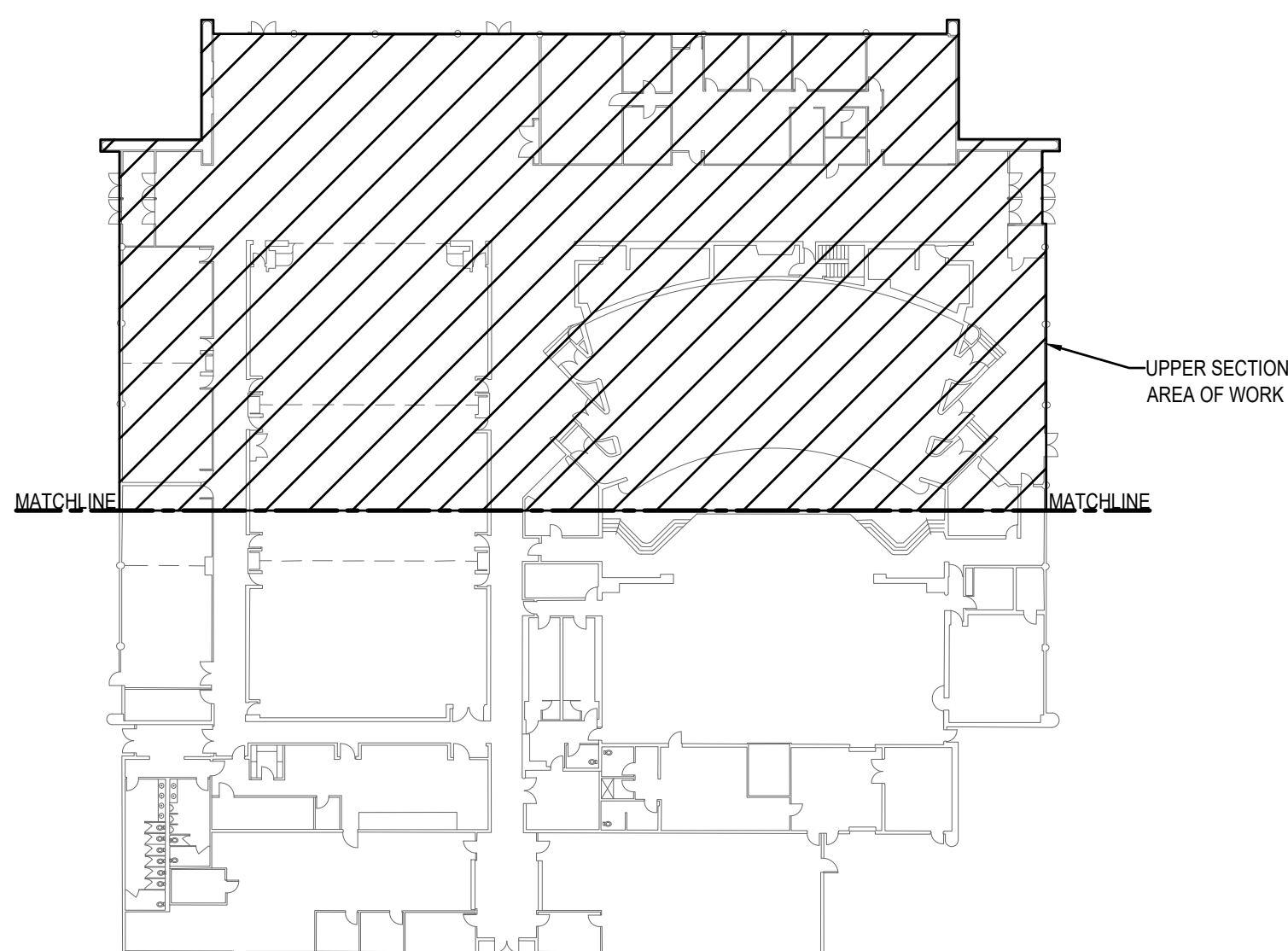
SYMBOL USED FOR NOTE CALLOUT. NOTES MAY NOT BE USED ON THIS SHEET.

- CONNECT SUCH THAT EITHER OCCUPANCY SENSOR WILL CONTROL THE LIGHTING IN THIS ROOM.
- RECONNECT NEW LIGHTING TO THE EXISTING LIGHTING CIRCUITS IN THIS AREA.
- VERTICALLY MOUNTED 2" WALL BRACKET FIXTURES. PATCH AND REPAIR AS NEEDED DURING INSTALLATION.
- CONNECT TO NEW SWITCH TO BE INSTALLED IN ROOM. RE: E2.1
- COORDINATE MOUNTING OF THESE FIXTURES WITH THE EXISTING CONDITIONS AND CITY.
- PROVIDE AND INSTALL NEW DMX CABLING BETWEEN THE INDIVIDUAL DMX CONTROLLED FIXTURES AND THE DMX CONTROL SYSTEM LOCATED IN THE ELECTRICAL CLOSET IN THE EXHIBITION AREA 101. ALL CABLING FOR THE LIGHTING CONTROL SYSTEM TO BE PRE-MANUFACTURED AND TESTED.
- BID ALTERNATE 1 EXHIBITION AREA 101, LOBBY 101, & LOBBY 102 TO INCLUDE THE RGB FIXTURES AND CONTROLS PROVIDE AND INSTALL THE ID1 AND ID2 FIXTURES ADJACENT TO BUT ON THE OUTSIDE OF THE CORRESPONDING ID1B AND ID2B FIXTURES. PROVIDE AND INSTALL ALL DMX CABLING AND CONTROLS AS PART OF THE ALTERNATE.
- PROVIDE AND INSTALL DMX SYSTEM POWER SUPPLIES, REPEATERS AND CONTROL SYSTEM COMPONENTS IN THIS AREA WITHIN CLOSET FOR BUILDING STAFF USE. PROVIDE ALL CABLING, CONNECTIONS, DEVICES AND PROGRAMMING. ALL CABLING FOR THE LIGHTING CONTROL SYSTEM TO BE PRE-MANUFACTURED AND TESTED.
- UTILIZE THE EXISTING LIGHTING CIRCUITS FOR THIS LIGHTING. PROVIDE AND INSTALL NEW 0-10V DIMMING MODULES AND CABLING BACK TO THE EXISTING ETC DIMMING RACK.
- PROVIDE AND INSTALL NEW 0-10V DIMMING MODULES IN THE EXISTING ETC SENSOR 3 DIMMING RACK. THE REQUIRED QUANTITY OF NEW MODULES SHALL BE COORDINATED WITH EXISTING SITE CONDITIONS. PROVIDE ALL MODULES AND PROGRAMMING AS REQUIRED FOR THE NEW MODULES TO INTERFACE WITH ALL EXISTING ETC CONTROL PANELS.
- PROVIDE AND INSTALL NEW GRAPHICAL TOUCH SCREEN CONTROL IN THIS AREA WITHIN CLOSET FOR BUILDING STAFF USE. QUANTITY AS REQUIRED. PROVIDE AND INSTALL ALL CABLING, CONNECTORS, DEVICES AND PROGRAMMING. ALL CABLING FOR THE LIGHTING CONTROL SYSTEM TO BE PRE-MANUFACTURED AND TESTED.
- PROVIDE AND INSTALL NEW SCENE CONTROLLER WITH 4 SCENE. ON/OFF, RAISE/LOWER, QUANTITY INDICATED IN THIS AREA. PROVIDE AND INSTALL ALL CABLING, CONNECTIONS, DEVICES, AND PROGRAMMING. ALL CABLING FOR THE LIGHTING CONTROL SYSTEM TO BE PRE-MANUFACTURED AND TESTED PROVIDE AND INSTALL NEW
- PROVIDE AND INSTALL NEW ON/OFF CONTROL INTERCONNECTED WITH THE CONTROL SYSTEM IN THIS AREA. PROVIDE AND INSTALL ALL CABLING, CONNECTIONS, DEVICES, AND PROGRAMMING. ALL CABLING FOR THE LIGHTING CONTROL SYSTEM TO BE PRE-MANUFACTURED AND TESTED.
- DIGITAL LIGHTING CONTROLS IN THIS AREA. REFER TO SPECIFICATIONS FOR ADDITIONAL INFORMATION.

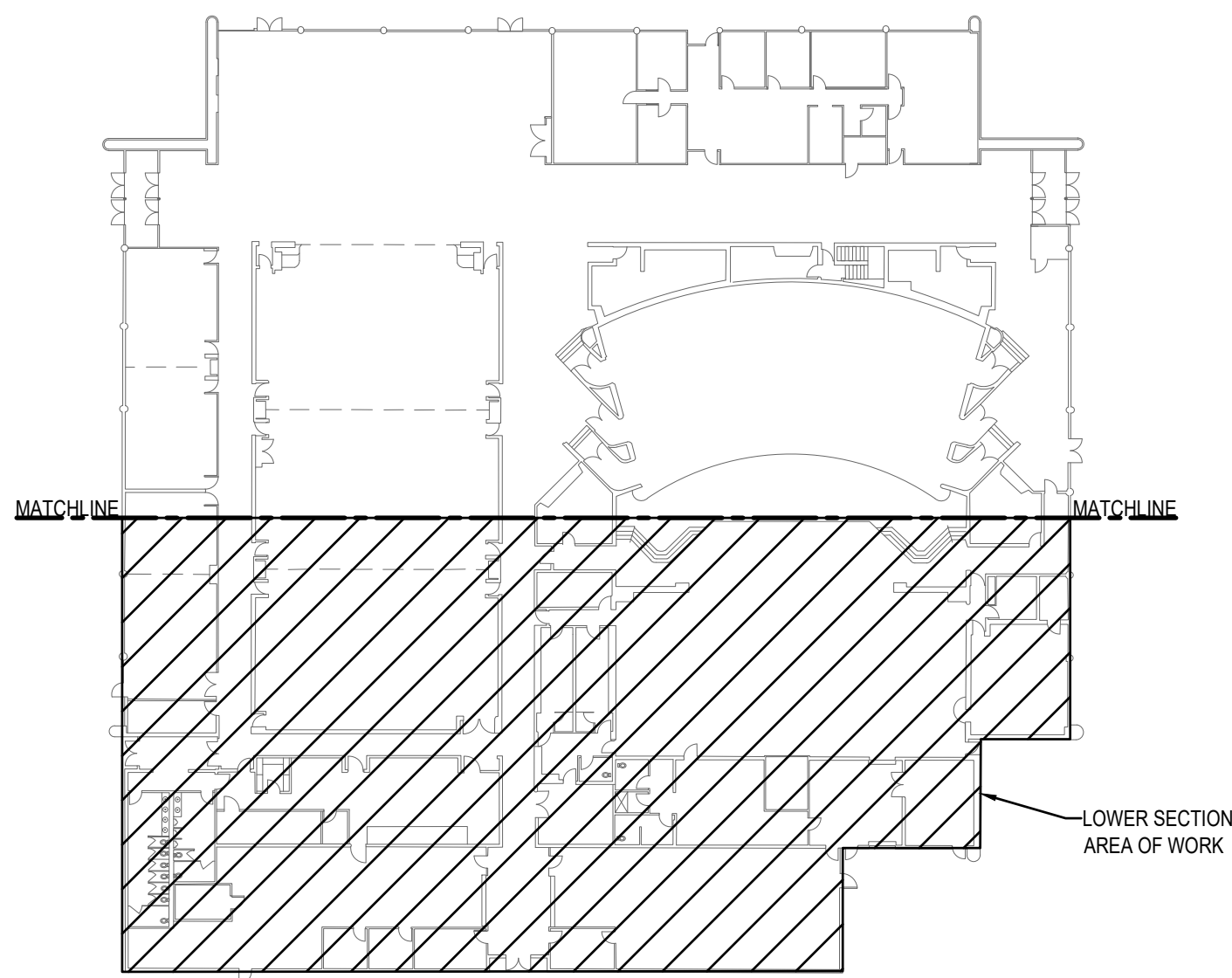
NORTH SECTION NEW LIGHTING PLAN
SCALE 1/8" = 1'-0"



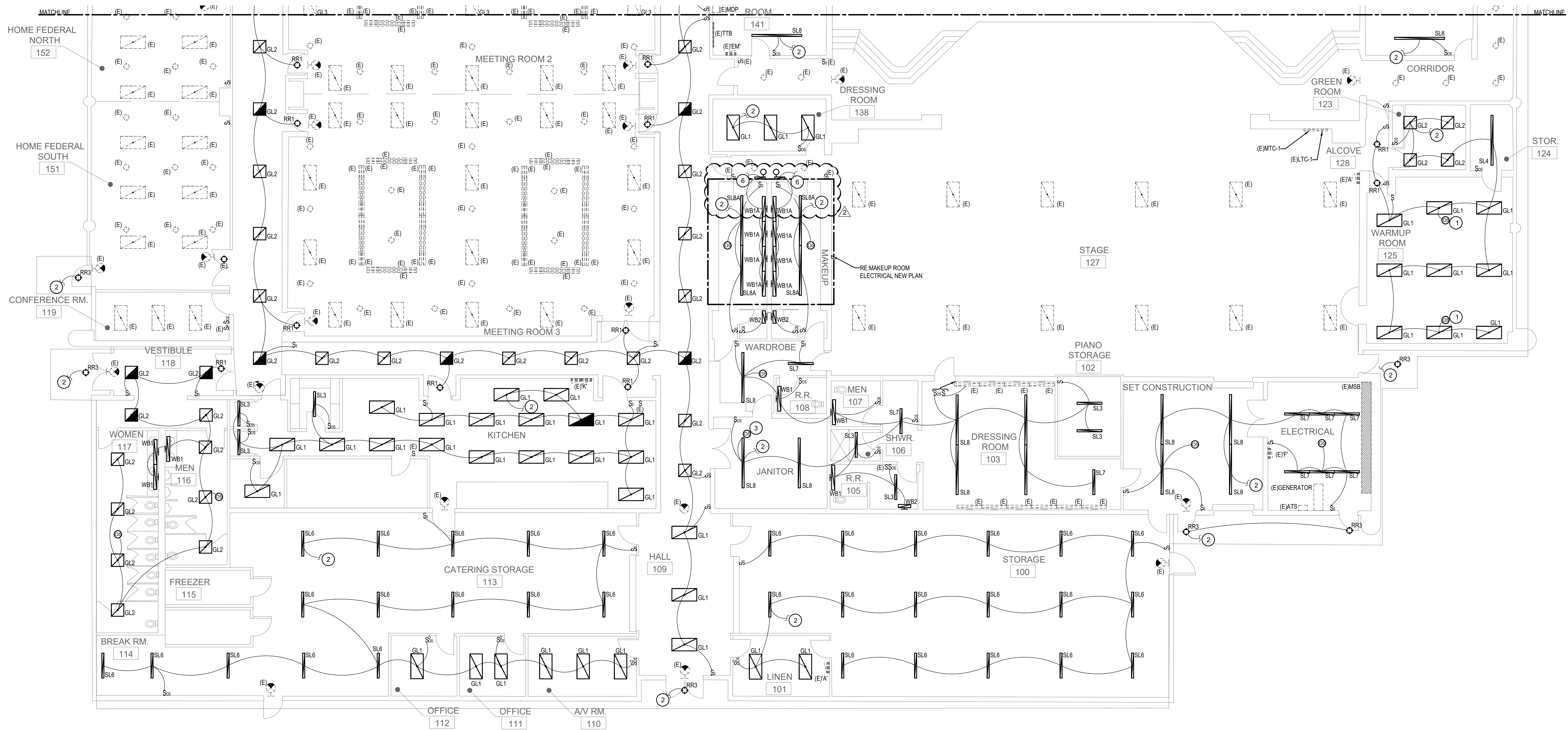
UPPER LEVEL NEW LIGHTING PLAN
SCALE 1/8" = 1'-0"



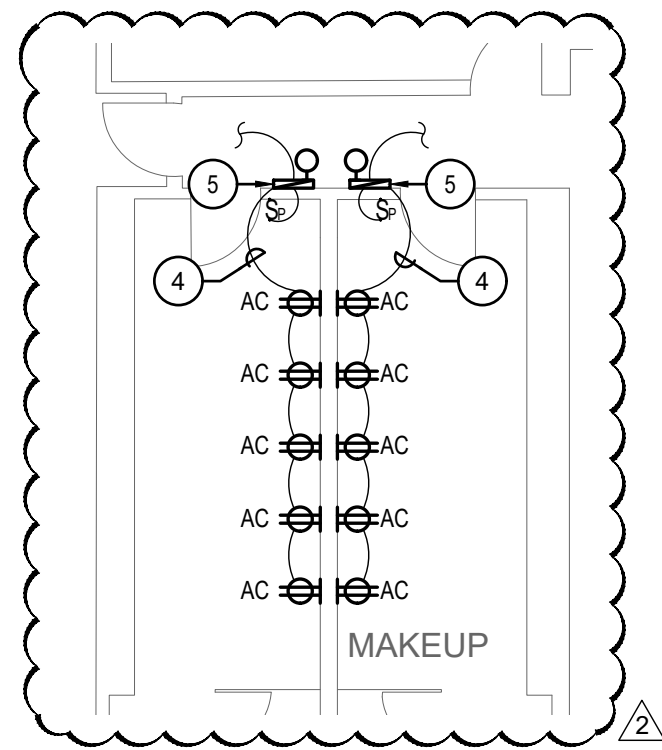
KEY PLAN
NTS



KEY PLAN
NTS
NORTH



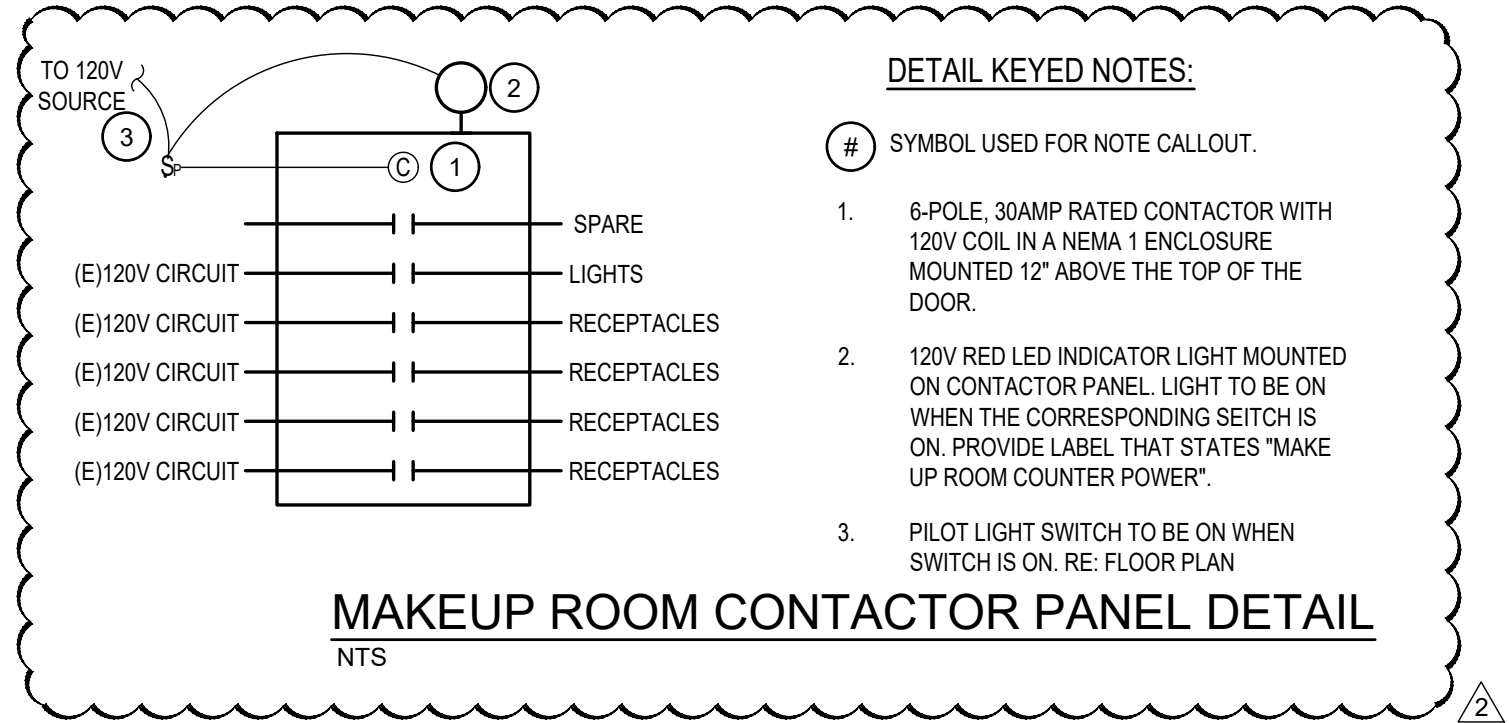
SOUTH SECTION NEW LIGHTING PLAN
SCALE 1/8" = 1'-0"
NORTH



MAKEUP ROOM ELECTRICAL NEW PLAN
SCALE 1/8" = 1'-0"
NORTH

KEYED NOTES:

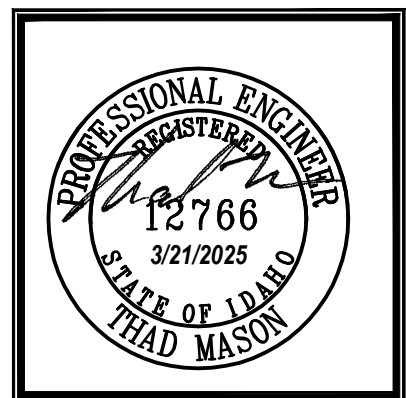
1. CONNECT SUCH THAT EITHER OCCUPANCY SENSOR WILL CONTROL THE LIGHTING IN THIS ROOM.
2. RECONNECT NEW LIGHTING TO THE EXISTING LIGHTING CIRCUITS IN THIS AREA.
3. PENDANT MOUNT OCCUPANCY SENSOR 7' FROM CEILING.
4. INTERCEPT AND EXTEND EXISTING RECEPTACLE CIRCUITS IN THE COMBINATION LIGHTING-POWER CHANNEL THAT IS BEING REMOVED. ROUTE ALL RECEPTACLE CIRCUITS FOR THE ROOM THROUGH THE MAKEUP ROOM CONTACTOR PANEL FOR THIS ROOM. PER NEC 520.13 AND 520.14 COORDINATE WITH EXISTING SITE CONDITIONS.
5. MAKEUP ROOM CONTACTOR PANEL, 1 PER ROOM. RE-MAKEUP ROOM CONTACTOR PANEL DETAIL.
6. INTERCEPT THE EXISTING CIRCUIT FOR THE WB1A LIGHT FIXTURES AND ROUTE CIRCUIT THROUGH THE MAKEUP ROOM CONTACTOR PANEL.



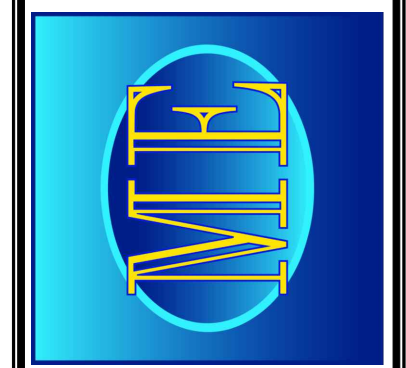
DETAIL KEYED NOTES:

1. 6-POLE, 30AMP RATED CONTACTOR WITH 120V COIL IN A NEMA 1 ENCLOSURE MOUNTED 12" ABOVE THE TOP OF THE DOOR.
2. 120V RED LED INDICATOR LIGHT MOUNTED ON CONTACTOR PANEL. LIGHT TO BE ON WHEN THE CORRESPONDING SWITCH IS ON. PROVIDE LABEL THAT STATES "MAKE UP ROOM COUNTER POWER".
3. PILOT LIGHT SWITCH TO BE ON WHEN SWITCH IS ON. RE: FLOOR PLAN

NO.	REVISIONS	DATE
1	ADDENDUM #1	25-03-07
2	ADDENDUM #2	25-03-20



MUSGROVE
ENGINEERING, P.A.
224 S. Whippoorwill Way
Boise, Idaho 83709
208.384.0385
musgrovepa.com
OVER 40 YEARS OF EXCELLENCE



NAMPA CIVIC CENTER
LIGHTING UPGRADE - PHASE 2
311 3RD ST.
NAMPA, ID

PROJECT	23-150
DRAWN	EH
CHECKED	TM
DATE	25-2-28
SCALE	AS NOTED
SHEET	

E2.1